

- Beach Unit extent
- Geobags
- Groynes
- Retaining Walls
- Revetment - Council
- Revetment - Other
- Rock wall - Council
- Rock wall - Other
- Scours - Council
- Scours - Other

Pathways (Existing)

RouteStyle

- Pathway
- Beach access
- Boardwalk
- Crossing
- Stairway
- Underpass
- Storm Tide Gauges

Qld Heritage Register (DERM)

STATUS

- Archaeological place
- Protected area
- State heritage place
- Stormwater Open Drain (Council)

Stormwater Pipe (Council)

Type

- Allotment
- Box
- Pipe

Stormwater Culvert (Council)

Type

- Box Culvert
- Pipe Culvert
- Stormwater Water Quality Area (Council)

Beaches (Patrolled By)

PatrolledBy

- Council
- QLD Surf Life Saving

Beach AccessType

- Beach Access/Boat Ramp
- Pedestrian Access
- No Direct Access
- Vehicle Access

- Community Hub (800m Radius)

- Existing Signed Trails

- Recreation Park, Local
- Recreation Park, District
- Recreation Park, SCW
- Sports Ground
- Environment Reserve
- Conservation Estate

- State Forest Estate

- SEQ Water
- SEQ Water associated Land

- Beach and Dunal Systems

- Amenity Reserve

- Utility

- Riparian Corridor

- Education Facility

- Specific Purpose Sports

- Community Facility

- Waterway

- Urban Development Area under ULDA Act 2007

- Bathing Reserves (Gazetted)

Moreton Bay Marine Park (Zoning)

ZONE_

- Conservation Park Zone
- General Use Zone
- Habitat Protection Zone
- Marine National Park Zone

Significant Coastal Dunes (DERM)

UNIT_NAME

- NULL VALUE
- BEACH RIDGES
- BLOWOUT PARABOLIC DUNE
- COASTAL DEPOSIT
- DUNE
- NEW DUNE
- Fish Habitat Areas

SEQ Environmental Values (Levels of Protection)

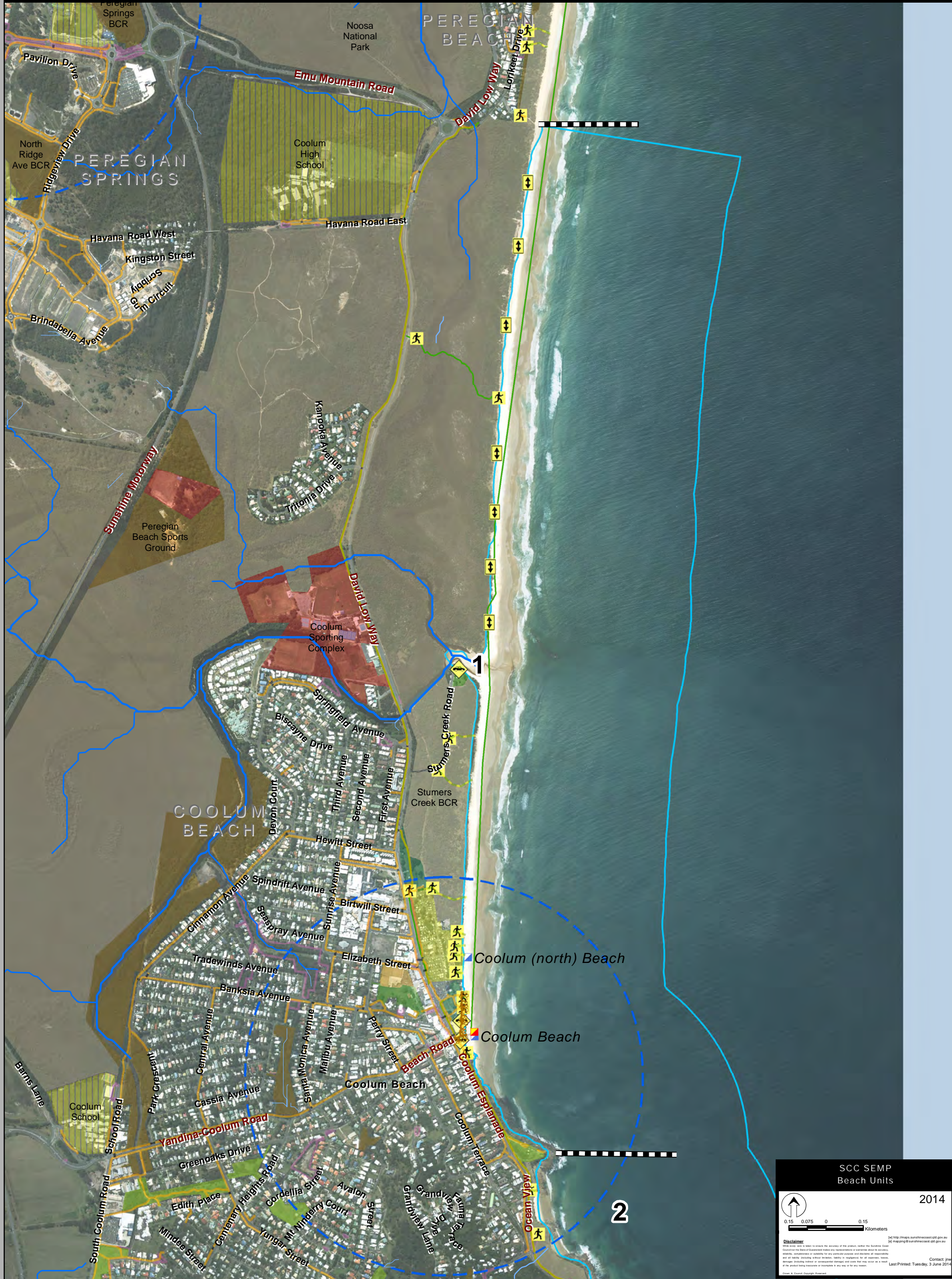
LEVEL OF PROTECTION

- High Ecological Values Freshwater
- High Ecological Values Marine
- Slightly-moderately distributed freshwater
- Slightly-moderately distributed marine

Working draft SEMP
Beach Units

Disclaimer
This map is a working draft and is not intended to be used for legal purposes. It is provided for information only and is subject to change without notice. The Council is not responsible for any errors or omissions in this map. For more information, please contact the Council's Planning and Development Services Unit on (07) 5499 1000 or visit our website at www.sunshinecoast.qld.gov.au.

Contact: me
Last Printed: Wednesday, 21 August 2013



SCC SEMP
Beach Units

2014

0.15 0.075 0 0.15
Kilometers

Disclaimer
The Council has taken all reasonable steps to ensure the accuracy of the product, but the Sunshine Coast Council and the State of Queensland make no representations or warranties about its accuracy, reliability, completeness or suitability for any particular purpose and disclaims all responsibility and all liability (including without limitation, liability in negligence) for all expenses, losses, damages (including indirect or consequential damages) and costs that may be incurred as a result of the product being inaccurate or incomplete in any way or for any reason.

Contact: jnw
Last Printed: Tuesday, 3 June 2014



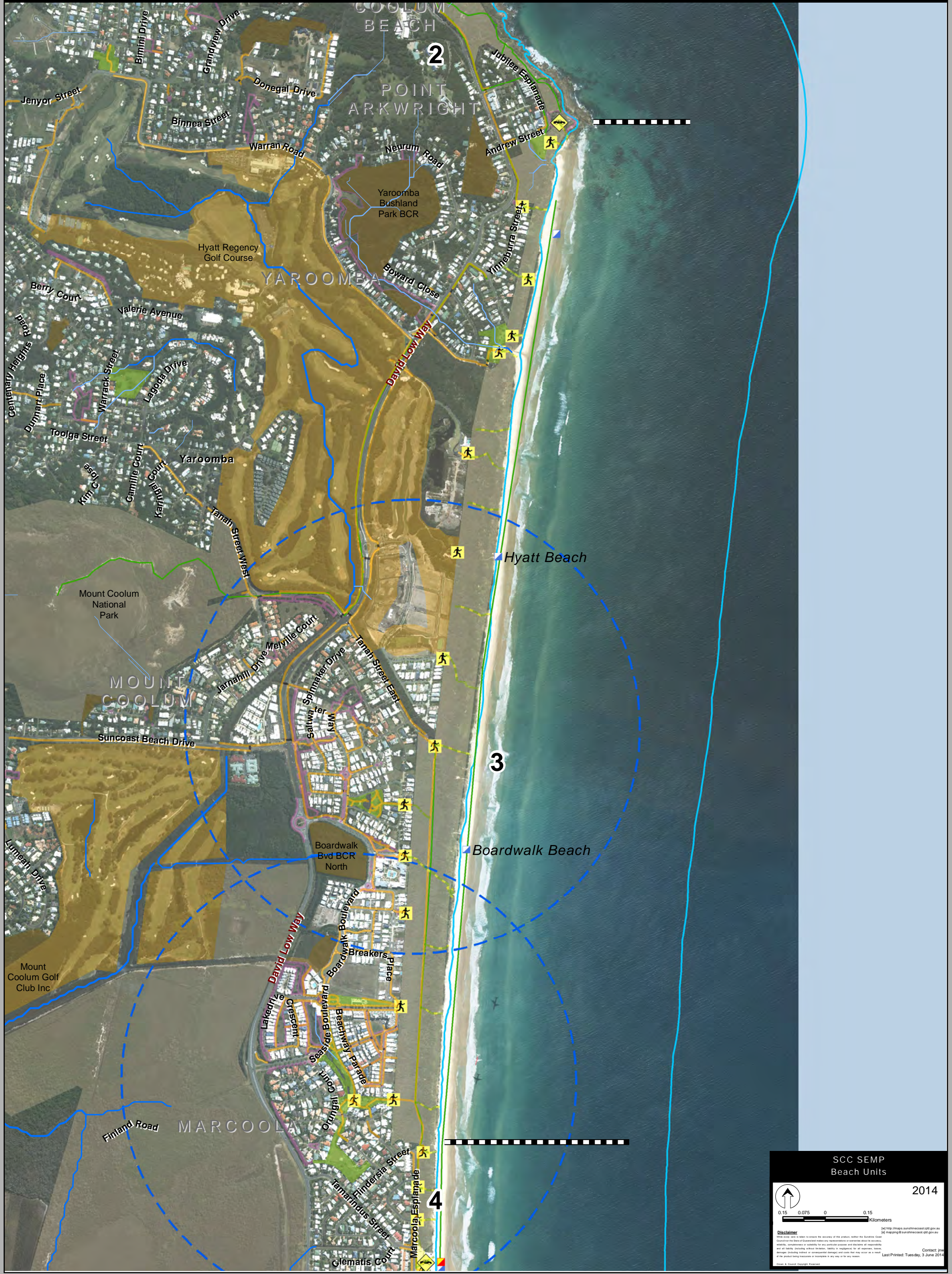
SCC SEMP
Beach Units

2014

0.06 0.03 0 0.06
Kilometers

Disclaimer:
This work was done to ensure the accuracy of the product, neither the Sunshine Coast Council nor the State of Queensland makes any representations or warranties about its accuracy, reliability, completeness or suitability for any particular purpose and disclaims all responsibility and all liability (including without limitation, liability in negligence) for all expenses, losses, damages (including indirect or consequential damages) and costs that may be incurred as a result of the product being inaccurate or incomplete in any way or for any reason.

Contact: jnw
Last Printed: Tuesday, 3 June 2014



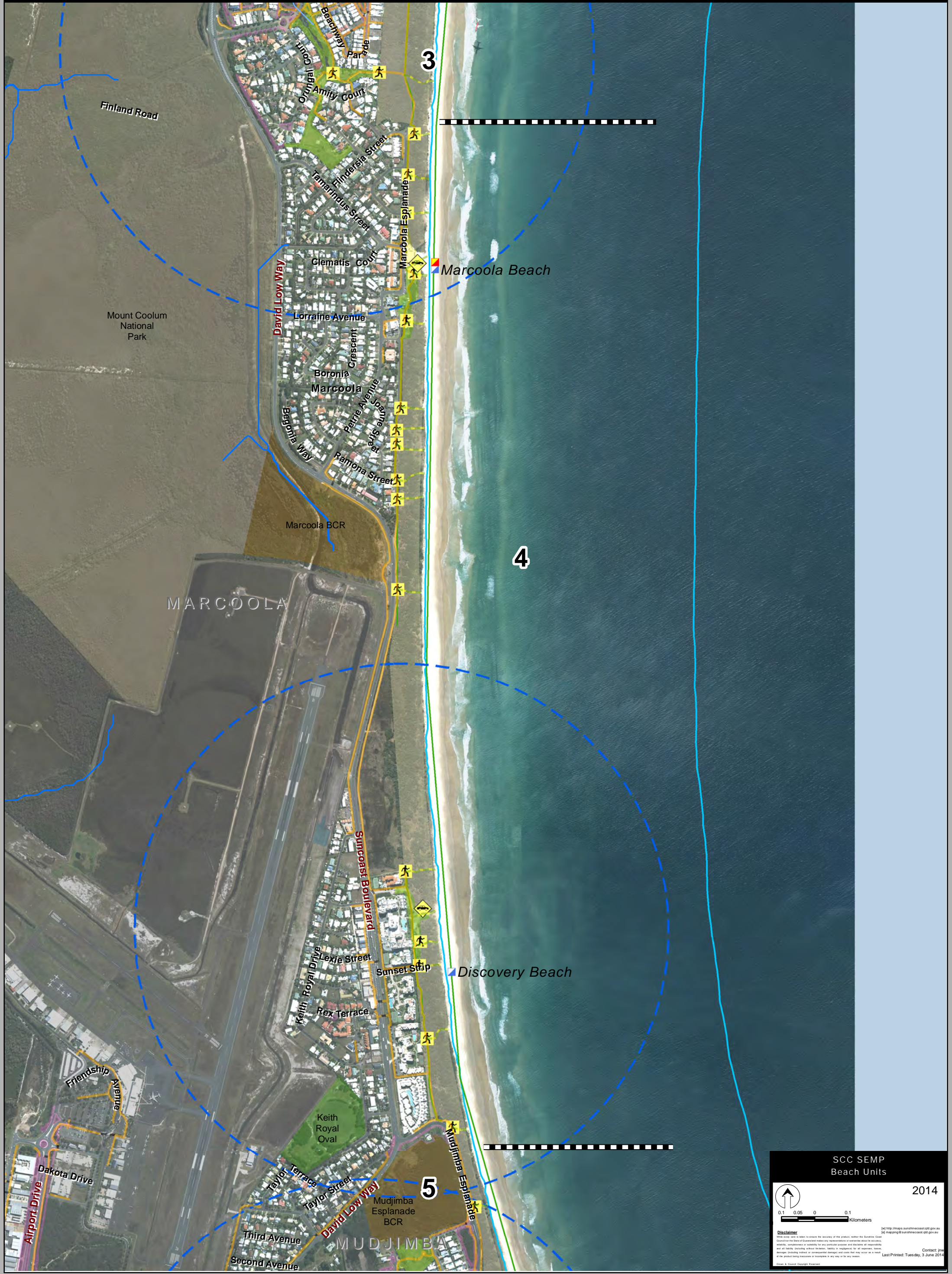
SCC SEMP
Beach Units

2014

0.15 0.075 0 0.15
Kilometers

Disclaimer: The Council makes no representation or warranty about the accuracy, reliability, completeness or suitability for any particular purpose and does not accept any liability (including without limitation, liability in negligence) for all expenses, losses, damages (including indirect or consequential damage) and costs that may be incurred as a result of the product being inaccurate or incomplete in any way or for any reason.

Contact: jnw
Last Printed: Tuesday, 3 June 2014



SCC SEMP
Beach Units

2014

0.1 0.05 0 0.1
Kilometers

Disclaimer
The Council has taken all reasonable steps to ensure the accuracy of the product, neither the Sunshine Coast Council nor the State of Queensland makes any representations or warranties about its accuracy, reliability, completeness or suitability for any particular purpose and disclaims all responsibility and all liability (including without limitation, liability in negligence) for all expenses, losses, damages (including indirect or consequential damages) and costs that may be incurred as a result of the product being inaccurate or incomplete in any way or for any reason.

Source: © Council. Copyright Reserved.

http://maps.sunshinecoast.qld.gov.au
mapping@sunshinecoast.qld.gov.au

Contact: jnw
Last Printed: Tuesday, 3 June 2014

Shoreline Erosion Management Plan Mapped Values Beach Unit 5



SCC SEMP
Beach Units

2014

0.06 0.03 0 0.06
Kilometers

Disclaimer
This work is done to ensure the accuracy of the product, neither the Sunshine Coast Council nor the State of Queensland makes any representations or warranties about its accuracy, reliability, completeness or suitability for any particular purpose and disclaims all responsibility and all liability (including without limitation, liability in negligence) for all expenses, losses, damages (including indirect or consequential damages) and costs that may occur as a result of the product being inaccurate or incomplete in any way or for any reason.

Contact: jnw
Last Printed: Tuesday, 3 June 2014



SCC SEMP
Beach Units

2014

0.1 0.05 0 0.1
Kilometers

Disclaimer
This work was done to ensure the accuracy of the product, neither the Sunshine Coast Council nor the State of Queensland makes any representations or warranties about its accuracy, reliability, completeness or suitability for any particular purpose and disclaims all responsibility and all liability (including without limitation, liability in negligence) for all expenses, losses, damages (including indirect or consequential damages) and costs that may occur as a result of the product being inaccurate or incomplete in any way or for any reason.

http://maps.sunshinecoast.qld.gov.au
mapping@sunshinecoast.qld.gov.au

Contact: jnw
Last Printed: Tuesday, 3 June 2014



Shoreline Erosion Management Plan Mapped Values Beach Unit 8



SCC SEMP
Beach Units

2014

0.1 0.05 0 0.1
kilometers

Disclaimer:
The Council has taken all reasonable steps to ensure the accuracy of the product, but the Sunshine Coast Council and the State of Queensland make no representations or warranties about its accuracy, reliability, completeness or suitability for any particular purpose and disclaims all responsibility and all liability (including without limitation, liability in negligence) for all expenses, losses, damages (including indirect or consequential damages) and costs (including a reasonable cost of the product being insured or insurable) in any way or for any reason.

Source: © Council, Copyright Reserved

http://maps.sunshinecoast.qld.gov.au
http://mapping@sunshinecoast.qld.gov.au

Contact: jnw
Last Printed: Tuesday, 3 June 2014



SCC SEMP
Beach Units

2014

0.07 0.035 0 0.07
Kilometers

Disclaimer:
The Council has taken all reasonable steps to ensure the accuracy of the product, but the Sunshine Coast Council and the State of Queensland make no representations or warranties about its accuracy, reliability, completeness or suitability for any particular purpose and disclaims all responsibility and all liability (including without limitation, liability in negligence) for all expenses, losses, damages (including indirect or consequential damages) and costs that may be incurred as a result of the product being inaccurate or incomplete in any way or for any reason.

Contact: jnw
Last Printed: Tuesday, 3 June 2014

Shoreline Erosion Management Plan Mapped Values Beach Unit 10



SCC SEMP
Beach Units

2014

0.05 0.025 0 0.05
Kilometers

Disclaimer:
This map was prepared to assist in the delivery of the product, neither the Sunshine Coast Council nor the State of Queensland makes any representation or warranty about its accuracy, reliability, completeness or suitability for any particular purpose and disclaims all responsibility and all liability (including without limitation, liability in negligence) for all expenses, losses, damages (including indirect or consequential damages) and costs (including interest) in respect of the product being inaccurate or incomplete in any way or for any reason.

Contact: jmw
Last Printed: Wednesday, 4 June 2014



SCC SEMP
Beach Units

2014

0.045 0.0225 0 0.045
Kilometers

Disclaimer:
The Council has taken all reasonable steps to ensure the accuracy of the product, but the Sunshine Coast Council and the State of Queensland make no representations or warranties about its accuracy, reliability, completeness or suitability for any particular purpose and disclaims all responsibility for all liability (including without limitation, liability in negligence) for all expenses, losses, damages (including indirect or consequential damages) and costs (including interest) in respect of the product being inaccurate or incomplete in any way or for any reason.

Contact: jnw
Last Printed: Wednesday, 4 June 2014



2014

0.02 0.01 0 0.02 Kilometers

Scale bar and north arrow.

Disclaimer:
This work was done to ensure the accuracy of the product, neither the Sunshine Coast Council nor the State of Queensland makes any representations or warranties about its accuracy, reliability, completeness or suitability for any particular purpose and disclaims all responsibility and all liability (including without limitation, liability in negligence) for all expenses, losses, damages (including indirect or consequential damages) and costs that may be incurred as a result of the product being inaccurate or incomplete in any way or for any reason.

Contact: jnw
Last Printed: Wednesday, 4 June 2014



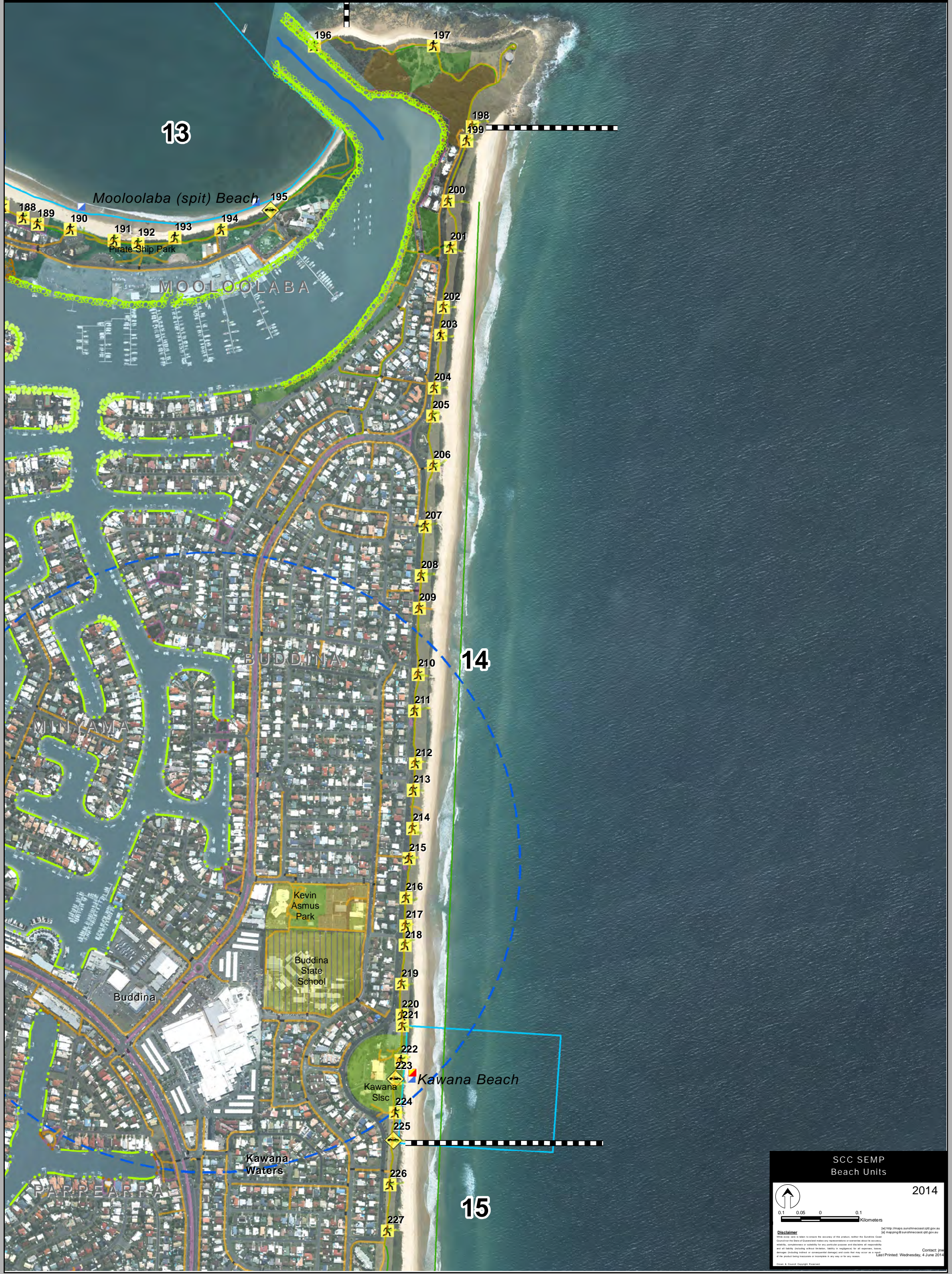
SCC SEMP
Beach Units

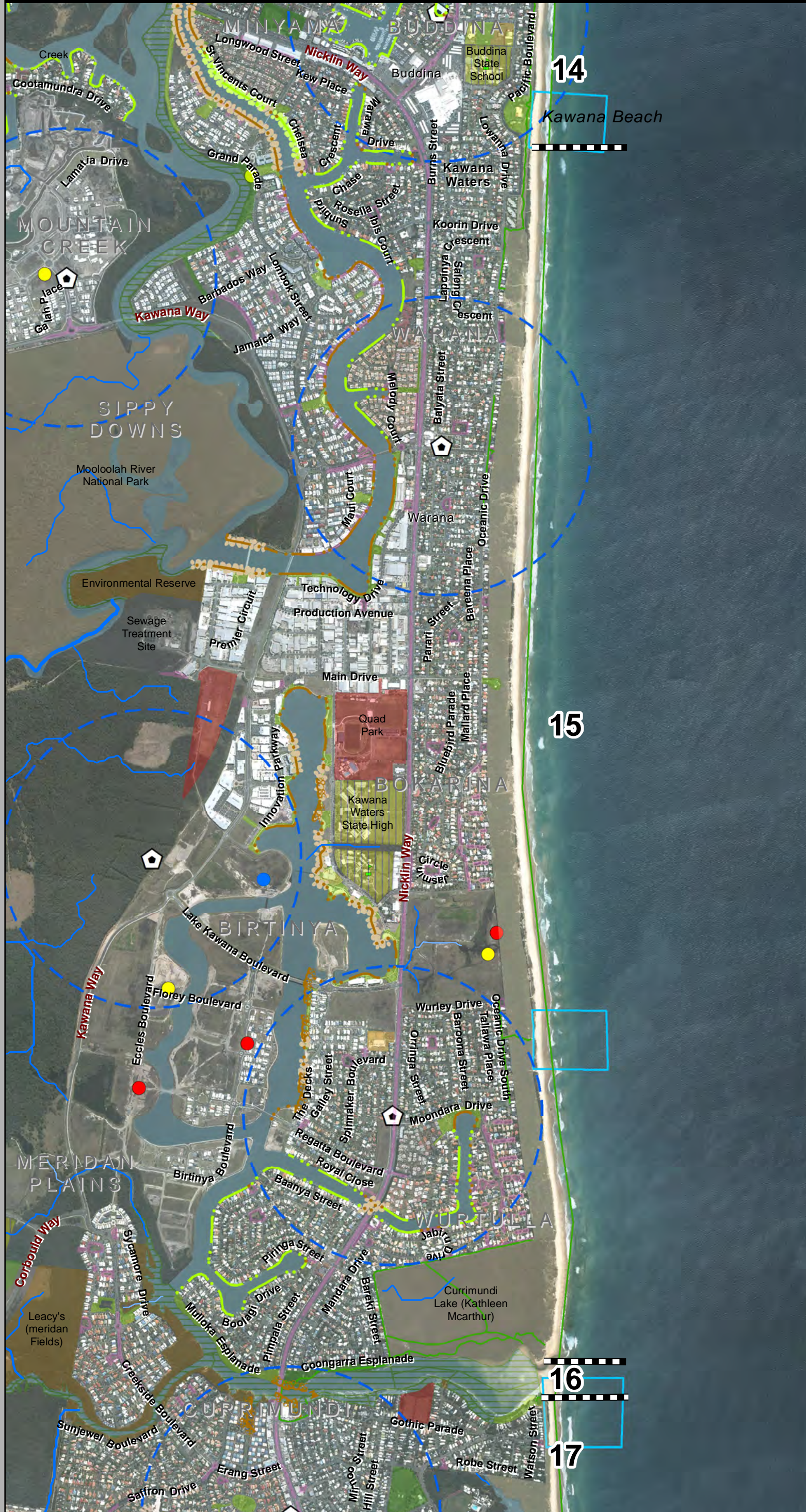
2014

0.07 0.035 0 0.07
Kilometers

Disclaimer:
The Council has taken all reasonable steps to ensure the accuracy of the product, but the Sunshine Coast Council and the State of Queensland make no representations or warranties about its accuracy, reliability, completeness or suitability for any particular purpose and disclaims all responsibility and all liability (including without limitation, liability in negligence) for all expenses, losses, damages (including indirect or consequential damages) and costs that may be incurred as a result of the product being inaccurate or incomplete in any way or for any reason.

Contact: jnw
Last Printed: Wednesday, 4 June 2014





SCC SEMP
Beach Units

2014

0.25 0.125 0 0.25
Kilometers

Disclaimer: The Council has taken all reasonable steps to ensure the accuracy of the product, but the Sunshine Coast Council and the State of Queensland make no representations or warranties about its accuracy, reliability, completeness or suitability for any particular purpose and disclaims all responsibility for all liability (including without limitation, liability in negligence) for all expenses, losses, damages (including indirect or consequential damages) and costs that may be incurred as a result of the product being inaccurate or incomplete in any way or for any reason.

Contact: jnw
Last Printed: Wednesday, 4 June 2014