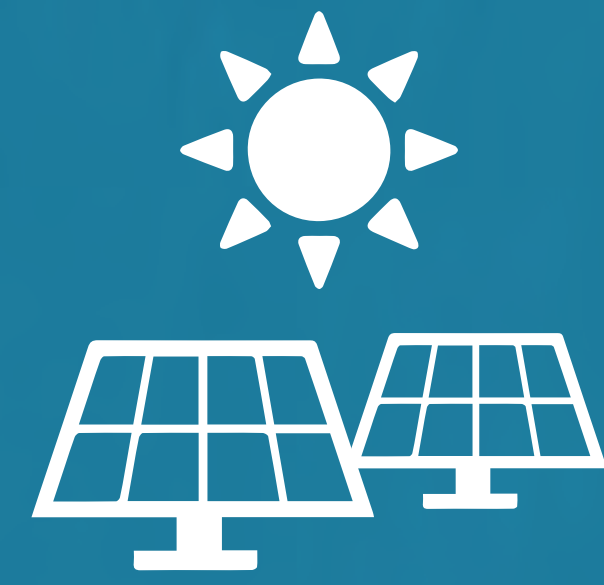


# Sunshine Coast Solar Farm

Powering our future



## Legend

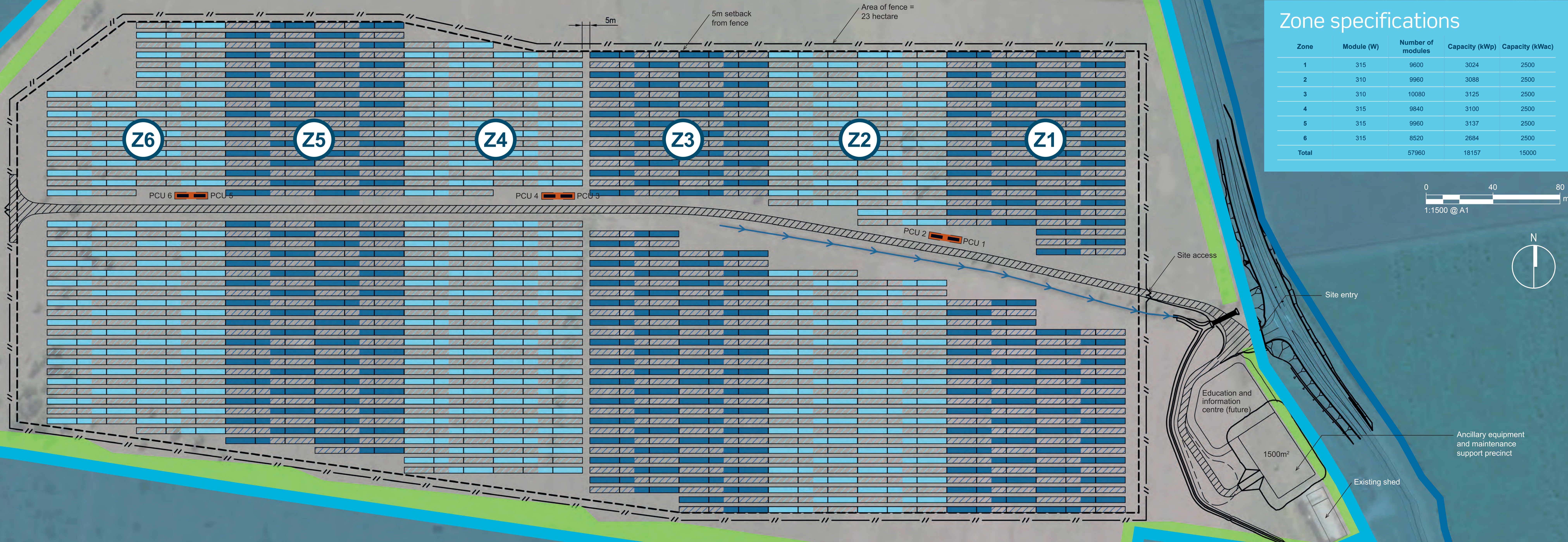
- Security fence line
- Existing drainage channel
- Emergency access corridor
- Internal access track
- Solar panels installed on three fixed mounting structures equivalent to one electrical table. Each 'electrical table' is about 60m long and contains 120 modules configured in 4 rows of 30 modules per row
- Two power conversion units on platform
- Panel zoning number
- Landscaping and vegetation buffer

## System specifications

- 18,157 kilowatt peak (kWp); 15,000 kilowatt (kWac)
- 37,920 x 315W solar modules
- 20,040 x 310W solar modules
- 6 x 2500kW power conversion units (PCU)
- Row to row spacing 6.63m (front of one row to front of next row)
- 20° tilt
- True north facing

## Zone specifications

| Zone         | Module (W) | Number of modules | Capacity (kWp) | Capacity (kWac) |
|--------------|------------|-------------------|----------------|-----------------|
| 1            | 315        | 9600              | 3024           | 2500            |
| 2            | 310        | 9960              | 3088           | 2500            |
| 3            | 310        | 10080             | 3125           | 2500            |
| 4            | 315        | 9840              | 3100           | 2500            |
| 5            | 315        | 9960              | 3137           | 2500            |
| 6            | 315        | 8520              | 2684           | 2500            |
| <b>Total</b> |            | <b>57960</b>      | <b>18157</b>   | <b>15000</b>    |



For more information, visit council's website and search 'Sunshine Coast Solar Farm'