

Warana Coastal Pathway Regeneration Schedule														
Regeneration Zone	Description	Dominant Canopy Condition	Understory Condition	Indicative Canopy Species	Indicative Understory Species	Fauna/Habitat	Notes	Ecological Integrity	Revegetation Schedule					
									Revegetation Species	Common Name	Size	Reveg Zone	Quantity	
<b>Zone D</b>														
Zone D Chainage 001 to 295	Open coastal grassland community in generally good condition (weeds <5%).  12.2.14a: Casuarina equisetifolia subsp. incana woodland to low open forest. Exposed frontal area.	Canopy absent.	Dense with occasional sand patches.	Nil	Flax Lily Marine Couch Pigface Scaevola Beach Bean Ipomea pes-caprae (Goats Foot)	Canopy cleared. Ideal habitat/feeding for native snakes, lizards, Birds-of-prey	Open herbland. Area to be selectively weeded – targeting least degraded areas and working out to the areas subject to highest levels of degradation. •Hand weed gazania, mother of millions, beach primrose •Treat exotic vines	High	<b>Revegetation Species</b> <b>Trees and Shrubs</b> Acacia sophorae Banksia integrifolia Casuarina equisetifolia Pandanus tectorius  <b>Grasses and Groundcovers</b> Dianella congesta Carpobrotus glaucescens Canavalia rosea Ipomoea pes-caprae Sporobolus virginicus Hibertia scandens Scaevola calendulaces	Coastal wattle Coastal Banksia Coastal She Oak Screw Pine  Beach Flax Lily Pig Face Beach Bean Goats Foot Marine Couch Ginea Flower Beach Scaevola	tube 25L 25L 100L  50mm 50mm 50mm 50mm 50mm 50mm 50mm	as shown on plan only as shown on plan only as shown on plan only as shown on plan only  RV-D1 RV-D1 RV-D1 RV-D1 RV-D1 RV-D1		
<b>Zone S</b>														
Zone S Chainage 295 to 460	Zone extends from Melaleuca woodland in west to Casuarina equisetifolia woodland in the centre of the zone and foredune herb complex in the east. Weed cover varies from up to 25% within the Casuarina woodland to <5% within the foredune.  12.2.14a: Casuarina equisetifolia subsp. incana woodland to low open forest.	Mid-dense. 0% weeds	Dense. 50% weeds	Beach Birdseye Beach Oak Coast Banksia Macaranga	*Basket Asparagus *Euphorbia heterophylla (Painted Spurge) Flax Lily	Retain woody debris of dead Beach Oaks for habitat	Area to be selectively weeded – targeting least degraded areas and working out to the areas subject to highest levels of degradation. •Treat asparagus fern and Gloriosa superba •Treat gazania •Treat Painted Spurge •Hand weed herbaceous weeds within foredune herbland •Selectively treat standing broad-leaved pepper trees and umbrella trees where safe to do so (away from public access areas)	Moderate High	<b>Revegetation Species</b> <b>Trees and Shrubs</b> Casuarina equisetifolia Alectryon coriaceus Acronychia imperforata Banksia integrifolia Macaranga tanarius Melaleuca quinquenervia Cupaniopsis anacardioides Austromyrtus dulcis  <b>Grasses and Groundcovers</b> Dianella congesta Hibertia scandens Blechnum indicum	Coastal She Oak Beach Bird's Eye Fraser Island Apple Coastal Banksia Macaranga Paperbark Tuckeroo Midyim  Beach Flax Lily Ginea Flower Bungwall	50mm 50mm 50mm 50mm 50mm 50mm 50mm 50mm	RG-S2 RG-S2 RG-S2 RG-S2 RG-S2 RG-S2 RG-S2 RG-S2		
<b>Zone M</b>														
Zone M Chainage 460 to 570	Open grassland community with low patches dominated by sedges. Generally only a light /mod weed cover and showing a range of diversity in recruitment and age classes with strong resilience.  12.2.14a: Casuarina equisetifolia subsp. incana woodland to low open forest. Exposed frontal area.	Canopy absent.	Dense with occasional sand patches. <10% weeds.	Nil	Flax Lily Marine Couch Pigface Scaevola Beach Bean Ipomea pes-caprae (Goats Foot)	Ideal habitat/feeding for native snakes, lizards, Birds-of-prey	Open herbland. Canopy cleared. Area to be selectively weeded – targeting least degraded areas and working out to the areas subject to highest levels of degradation. •Control Brazilian Cherry •Prioritise control of Mother of Millions and gazania •Treat asparagus fern and Gloriosa superba •Hand weed herbaceous weeds within foredune herbland.	High	<b>Revegetation Species</b> <b>Trees and Shrubs</b> Acacia sophorae Banksia integrifolia Casuarina equisetifolia Pandanus tectorius  <b>Grasses and Groundcovers</b> Dianella congesta Carpobrotus glaucescens Canavalia rosea Ipomoea pes-caprae Sporobolus virginicus Hibertia scandens Scaevola calendulaces	Coastal wattle Coastal Banksia Coastal She Oak Screw Pine  Beach Flax Lily Pig Face Beach Bean Goats Foot Marine Couch Ginea Flower Beach Scaevola	tube 25L 25L 100L  50mm 50mm 50mm 50mm 50mm 50mm	as shown on plan only as shown on plan only as shown on plan only as shown on plan only  RG-M1 and RG-M2 RG-M1 and RG-M2 RG-M1 and RG-M2 RG-M1 and RG-M2 RG-M1 and RG-M2 RG-M1 and RG-M2		
<b>Zone X</b>														
Zone X Chainage 570 to 660	12.2.14a: Casuarina equisetifolia subsp. incana woodland to low open forest. Structurally poor Casuarina equisetifolia and Banksia integrifolia woodland with sedge field. Widespread weed infestation; however, moderate recruitment and resilience observed.	Mid-dense. 40% weeds. Broadleaf Pepper dominant in sections of canopy.	Dense. 50% weeds	Beach Birdseye Beach Oak Coast Banksia Macaranga Tuckeroo	*Basket Asparagus *Euphorbia heterophylla (Painted Spurge) Flax Lily Blady Grass	Retain woody debris of dead Beach Oaks and Banksias for habitat	Area to be selectively weeded – targeting least degraded areas and working out to the areas subject to highest levels of degradation. •Treat asparagus fern, Gloriosa superba and Painted Spurge •Treat Easter cassia •Treat exotic vine species •Selectively treat standing broad-leaved pepper trees and umbrella trees where safe to do so (away from public access areas)	Moderate High	<b>Revegetation Species</b> <b>Trees and Shrubs</b> Acacia sophorae Banksia integrifolia Casuarina equisetifolia Pandanus tectorius  <b>Grasses and Groundcovers</b> Dianella congesta Carpobrotus glaucescens Canavalia rosea Ipomoea pes-caprae Sporobolus virginicus Hibertia scandens Scaevola calendulaces	Coastal wattle Coastal Banksia Coastal She Oak Screw Pine  Beach Flax Lily Pig Face Beach Bean Goats Foot Marine Couch Ginea Flower Beach Scaevola	tube 25L 25L 100L  50mm 50mm 50mm 50mm 50mm 50mm	as shown on plan only as shown on plan only as shown on plan only as shown on plan only  RG-X1 and RG-X2 RG-X1 and RG-X2 RG-X1 and RG-X2 RG-X1 and RG-X2 RG-X1 and RG-X2 RG-X1 and RG-X2		
<b>Zone Y</b>														
Zone Y Chainage 660 to 700 and 765 to 800	12.2.14a: Casuarina equisetifolia subsp. incana woodland to low open forest. Area is dominated by maintained exotic grasses, garden extensions, exotic vegetation and weeds (25- 75%). Other than a few small nodes of native vegetation, the zone generally is characterised by poor resilience, recruitment and structure.	Mid-dense. 40% weeds. Broadleaf Pepper dominant in sections of canopy.	Dense. 50% weeds	Beach Birdseye Beach Oak Coast Banksia Macaranga Tuckeroo	*Basket Asparagus *Euphorbia heterophylla (Painted Spurge) Flax Lily Blady Grass	Retain woody debris of dead Beach Oaks and Banksias for habitat	Area to be selectively weeded - targeting least degraded areas and working out to the areas subject to highest levels of degradation. •Prioritise treatment of Bryophyllum sp. •Treat asparagus fern and Gloriosa superba •Selectively treat standing broad-leaved pepper trees and umbrella trees where safe to do so (away from public access areas)	Moderate High	<b>Revegetation Species</b> <b>Trees and Shrubs</b> Acacia sophorae Banksia integrifolia Casuarina equisetifolia Pandanus tectorius  <b>Grasses and Groundcovers</b> Dianella congesta Carpobrotus glaucescens Canavalia rosea Ipomoea pes-caprae Sporobolus virginicus Hibertia scandens Scaevola calendulaces	Coastal wattle Coastal Banksia Coastal She Oak Screw Pine  Beach Flax Lily Pig Face Beach Bean Goats Foot Marine Couch Ginea Flower Beach Scaevola	tube 25L 25L 100L  50mm 50mm 50mm 50mm 50mm 50mm	as shown on plan only as shown on plan only as shown on plan only as shown on plan only  RG-Y1 and RG-Y2 RG-Y1 and RG-Y2 RG-Y1 and RG-Y2 RG-Y1 and RG-Y2 RG-Y1 and RG-Y2 RG-Y1 and RG-Y2		

J	12/06/2024	BUSHLAND REGENERATION PLAN	CD	CD		
I	28/03/2024	REVISED PATH ALIGNMENT BETWEEN CH420-CH540 ISSUE	JB	HG	CD	
H	07/03/2024	REVISED CONSTRUCTION ISSUE	JB	HG	CD	A1 -
G	01/02/2024	ISSUED FOR CONSTRUCTION	JB	HG	CD	A3 -
Rv.	DATE	REVISIONS	DRAWN	CHECK 1	CHECK 2	SCALE



## COASTAL PATHWAY BA233 TO BA229 WARANA

### BUSHLAND REGENERATION SCHEDULE

Design ID.  
**P-K2705**

Sheet No. - Revision No.  
**L006 J**

Design & Placemaking Services | Landscape Architecture Services

FILE:O:\Design\Projects\P-K2705 Coastal Pathway BA233 to BA229 Warana\_West Alignment 240417 - Copy.dwg DATE:11/06/2024 BY:cm

Zone N									Revegetation Species	Common Name	Size	Reveg Zone	Quantity
Zone N Chainage 700 to 765	Remnant Casuarina equisetifolia and Banksia integrifolia open woodland and foredune herb/grassland community with light/mod weed cover; however, generally showing a range of diversity in recruitment and age classes with strong resilience.	Mid-dense. 40% weeds. Broadleaf Pepper dominant in sections of canopy.	Dense. 50% weeds	Beach Birdseye Beach Oak Coast Banksia Macaranga Tuckeroo	*Basket Asparagus *Euphorbia heterophylla (Painted Spurge) Flax Lily Blady Grass	Retain woody debris of dead Beach Oaks and Banksias for habitat	Area to be selectively weeded – targeting least degraded areas and working out to the areas subject to highest levels of degradation. •Prioritise control of Mother of Millions •Treat asparagus fern and Gloriosa superba •Hand weed herbaceous weeds within foredune hermland. •Selectively treat standing broad-leaved pepper trees and umbrella trees where safe to do so (away from public access areas)	Moderate High	<b>Trees and Shrubs</b> Casuarina equisetifolia Alectryon coriaceus Acronychia imperforata Banksia integrifolia Macaranga tanarius Melaleuca quinquenervia Cupaniopsis anacardioides Austromyrtus dulcis	Coastal She Oak Beach Bird's Eye Fraser Island Apple Coastal Banksia Macaranga Paperbark Tuckeroo Midyim	50mm 50mm 50mm 50mm 50mm 50mm 50mm	RG-N2 RG-N2 RG-N2 RG-N2 RG-N2 RG-N2 RG-N2	
<b>Zone E(a)</b>									<b>Revegetation Species</b>	<b>Common Name</b>	<b>Size</b>	<b>Reveg Zone</b>	<b>Quantity</b>
Zone E(a) Chainage 800 to 900 and 940 to 955	12.2.14a: Casuarina equisetifolia subsp. incana woodland to low open forest. Regenerating littoral rainforest community with light to moderate density of weeds (particularly on edges).	Directly north of CH 800 Mid-dense. 40% weeds. Broadleaf Pepper dominant in sections of canopy.  Midway between 800-900 Dense. Consisted of Beach Birdseye and Cottonwood. Broadleaf Pepper 20%.  Directly south of CH900 Dense. Consisted of Beach Birdseye and Cottonwood with Flagellaria indica dominating.	Dense. 50% weeds  Semi-dense. 20% weeds.  Semi-dense. 20% weeds.	Dense. 50% weeds  Semi-dense. 20% weeds.  Semi-dense. 20% weeds.	*Basket Asparagus *Euphorbia heterophylla (Painted Spurge) Flax Lily Blady Grass  *Euphorbia heterophylla (Painted Spurge) Oplismenus spp. (Beard Grass) Austromyrtus dulcis (Midyim)  *Euphorbia heterophylla (Painted Spurge) Flax Lily	Retain woody debris of dead Beach Oaks and Banksias for habitat  Excellent hide for mammals / birds.	Work from nodes of resilience and strengthen areas with good canopy cover and high diversity. Maintain good vegetation to prevent any degradation. •Treat asparagus fern and Gloriosa superba •Treat painted spurge •Treat exotic vine spp. •Selectively treat standing broad-leaved pepper trees and umbrella trees where safe to do so (away from public access areas)	Moderate High	<b>Trees and Shrubs</b> Casuarina equisetifolia Alectryon coriaceus Acronychia imperforata Banksia integrifolia Macaranga tanarius Melaleuca quinquenervia Cupaniopsis anacardioides Austromyrtus dulcis	Coastal She Oak Beach Bird's Eye Fraser Island Apple Coastal Banksia Macaranga Paperbark Tuckeroo Midyim	50mm 50mm 50mm 50mm 50mm 50mm 50mm	RG-E(a)2 RG-E(a)2 RG-E(a)2 RG-E(a)2 RG-E(a)2 RG-E(a)2 RG-E(a)2	
<b>Zone E(b)</b>									<b>Revegetation Species</b>	<b>Common Name</b>	<b>Size</b>	<b>Reveg Zone</b>	<b>Quantity</b>
Zone E(b) Chainage 900 to 940	12.2.7: Melaleuca quinquenervia open forest on sand plain. Regenerating littoral rainforest community with light to moderate density of weeds (particularly on edges).	Semi-closed. 12m height. 0% weeds	Semi-dense to dense. <10% weeds	Melaleuca quinquenervia (Coastal Paperbark) Glochidion ferdinandii (Cheese Tree) Elaeocarpus obovatus (Hard Quandong) Cupaniopsis anacardioides (Tuckeroo)	Oplismenus spp. (Beard Grass)	Ephemeral ponding. Potential frog breeding habitat. Nest in tall Tuckeroo canopy	Reprofilng needed for boardwalk section. Tuckeroos x 5 dbh >300mm Tree Root Protection Zone to be avoided.	High Minimal weed presence	<b>Trees and Shrubs</b> Melaleuca quinquenervia Glochidion ferdinandii Cupaniopsis anacardioides Elaeocarpus obovatus	Paperbark Coastal She Oak Tuckeroo Hard Quandong	50mm 25L 50mm 50mm	RG-E(b)2 RG-E(b)2 RG-E(b)2 RG-E(b)2	
<b>Zone F</b>									<b>Revegetation Species</b>	<b>Common Name</b>	<b>Size</b>	<b>Reveg Zone</b>	<b>Quantity</b>
Zone F Chainage 955 to 1015	12.2.14a: Casuarina equisetifolia subsp. incana woodland to low open forest. Exposed frontal area. Remnant Casuarina equisetifolia and Banksia integrifolia open woodland and foredune herb/grassland community with light/mod weed cover; however, generally showing a range of diversity in recruitment and age classes with strong resilience.	Mid-dense. 0% weeds.	Dense. 50% weeds	Beach Oak	Coastal couch *Euphorbia heterophylla (Painted Spurge) Flax Lily	Retain woody debris of dead Beach Oaks and Banksias for habitat	Area to be selectively weeded – targeting least degraded areas and working out to the areas subject to highest levels of degradation. •Treat asparagus fern and Gloriosa superba •Treat exotic vine spp. and Painted Spurge •Hand weed herbaceous weeds within foredune hermland.	High	<b>Trees and Shrubs</b> Pandanus tectorius Casuarina equisetifolia Banksia integrifolia	Screw Pine Coastal She Oak Coastal Banksia	100L 25L 25L	RG-F2 RG-F2 RG-F2	
									<b>Grasses and Groundcovers</b> Dianella congesta Carpobrotus glaucescens Canavalia rosea Ipomoea pes-caprae Sporobolus virginicus Hibertia scandens Scaevola calendulaces	Beach Flax Lily Pig Face Beach Bean Goats Foot Marine Couch Ginea Flower Beach Scaevola	50mm 50mm 50mm 50mm 50mm 50mm 50mm	RG-E(a)1 and RG-E(a)2 RG-E(a)1 and RG-E(a)2 RG-E(a)1 and RG-E(a)2 RG-E(b)1 and RG-E(b)2 RG-F1 and RG-F2 RG-F1 and RG-F2 RG-F1 and RG-F2 RG-F1 and RG-F2 RG-F1 and RG-F2 RG-F1 and RG-F2	
Regeneration Zones are from the Warana Foreshore Bushland Reserve Regeneration Works Plan 2014, which should be read in conjunction with this plan. Refer to the Warana Foreshore Bushland Reserve Regeneration Works Plan 2014 for Technical Weed Management Specifications													

J	12/06/2024	BUSHLAND REGENERATION PLAN	CD	CD		
I	28/03/2024	REVISED PATH ALIGNMENT BETWEEN CH420-CH540 ISSUE	JB	HG	CD	
H	07/03/2024	REVISED CONSTRUCTION ISSUE	JB	HG	CD	A1 -
G	01/02/2024	ISSUED FOR CONSTRUCTION	JB	HG	CD	A3 -
Rv.	DATE	REVISIONS	DRAWN	CHECK 1	CHECK 2	SCALE



**COASTAL PATHWAY BA233 TO BA229 WARANA**  
**BUSHLAND REGENERATION SCHEDULE**

Design ID. <b>P-K2705</b>
Sheet No. - Revision No. <b>L007 J</b>

FILE:O:\DesignApps\P-K2705 Coastal Pathway BA233 to BA229 Warana\_West Alignment 240417 - Copy.dwg DATE:11/June/2024 BY:cm


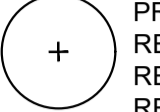

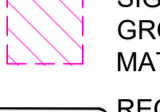
BA 233

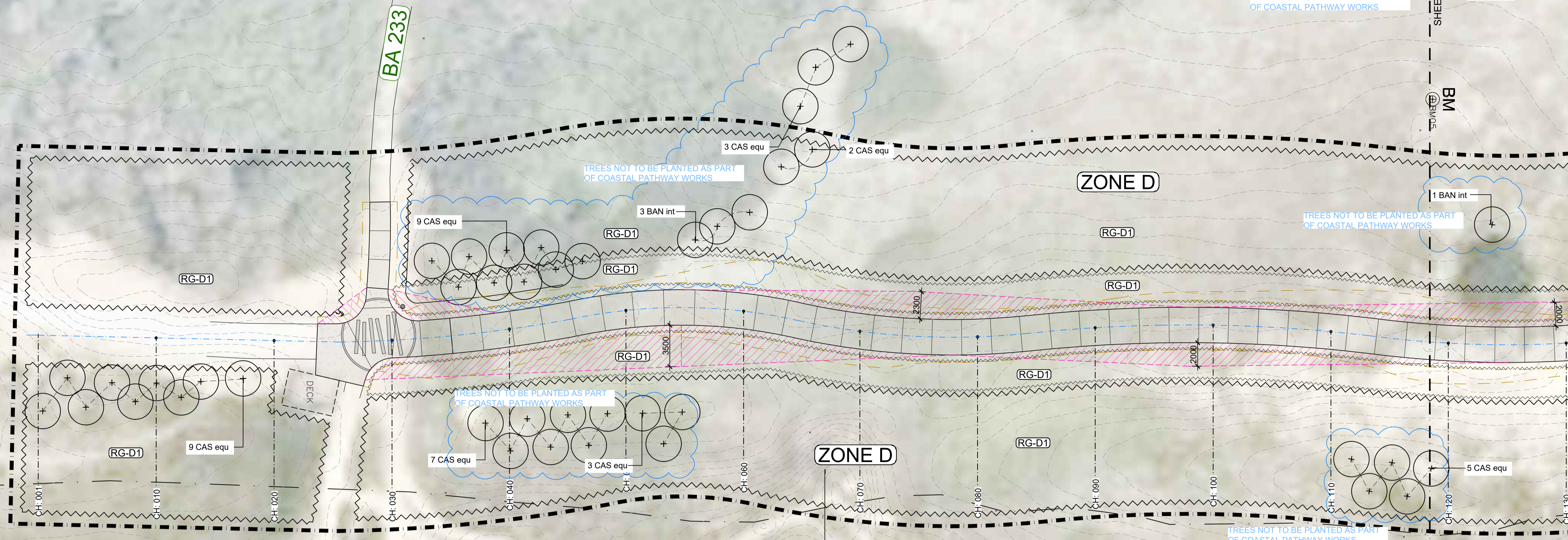
SHEET JOINS L402

BM

SHEET JOINS L402

**REVEGETATION PLANTING PLAN LEGEND**

- EOW - PRIMARY EXTENT OF WORKS
- - - EXISTING RP PROPERTY BOUNDARY
-  EXISTING TREE TO BE RETAINED AND PROTECTED. REFER TO TREE PROTECTION NOTES.
-  PROPOSED TREES REFER TO 900 SERIES PLANS REFER TO SPECIFICATION REFER TO PLAN SCHEDULE
-  BUSHLAND REGENERATION AREAS
-  SIGHTLINES AREAS - LOW GROUNDCOVERS ONLY MAXIMUM MATURE HEIGHT 0.4M
- REGENERATION ZONE** REFER TO REGENERATION SCHEDULE REFER TO REGENERATION PLAN
- (RG-D1)** RG-D1 - REVEGETATION TYPE D1: GRASSES & GROUNDCOVER ONLY U.N.O. REFER TO REGENERATION SCHEDULE
- (RG-S1)** RG-S1 - REVEGETATION TYPE S1: GRASSES & GROUNDCOVER ONLY REFER TO REGENERATION SCHEDULE
- (RG-S2)** RG-S2 - REVEGETATION TYPE S2: TREES, SHRUBS, GROUNDCOVERS REFER TO REGENERATION SCHEDULE
- (RG-M1)** RG-M1 - REVEGETATION TYPE M1: GRASSES & GROUNDCOVER ONLY REFER TO REGENERATION SCHEDULE
- (RG-M2)** RG-M2 - REVEGETATION TYPE M2: TREES, SHRUBS, GROUNDCOVERS REFER TO REGENERATION SCHEDULE
- (RG-X1)** RG-X1 - REVEGETATION TYPE X1: GRASSES & GROUNDCOVER ONLY REFER TO REGENERATION SCHEDULE
- (RG-X2)** RG-X2 - REVEGETATION TYPE X2: TREES, SHRUBS, GROUNDCOVERS REFER TO REGENERATION SCHEDULE
- (RG-Y1)** RG-Y1 - REVEGETATION TYPE Y1: GRASSES & GROUNDCOVER ONLY REFER TO REGENERATION SCHEDULE
- (RG-Y2)** RG-Y2 - REVEGETATION TYPE Y2: TREES, SHRUBS, GROUNDCOVERS REFER TO REGENERATION SCHEDULE
- (RG-N1)** RG-N1 - REVEGETATION TYPE N1: GRASSES & GROUNDCOVER ONLY REFER TO REGENERATION SCHEDULE
- (RG-N2)** RG-N2 - REVEGETATION TYPE N2: TREES, SHRUBS, GROUNDCOVERS REFER TO REGENERATION SCHEDULE
- (RG-E1)** RG-E1 - REVEGETATION TYPE E1: GRASSES & GROUNDCOVER ONLY REFER TO REGENERATION SCHEDULE
- (RG-E2)** RG-E2 - REVEGETATION TYPE E2: TREES, SHRUBS, GROUNDCOVERS REFER TO REGENERATION SCHEDULE
- (RG-F1)** RG-F1 - REVEGETATION TYPE F1: GRASSES & GROUNDCOVER ONLY REFER TO REGENERATION SCHEDULE
- (RG-F2)** RG-F2 - REVEGETATION TYPE F2: TREES, SHRUBS, GROUNDCOVERS REFER TO REGENERATION SCHEDULE



**REGENERATION MANAGEMENT ZONE D.**  
 OPEN COASTAL GRASSLAND COMMUNITY IN GENERALLY GOOD CONDITION (WEEDS <5%).  
 AREA TO BE SELECTIVELY WEEDED - TARGETING LEAST DEGRADED AREAS AND WORKING OUT TO THE AREAS SUBJECT TO HIGHEST LEVELS OF DEGRADATION.  
 HAND WEED GAZANIA, MOTHER OF MILLIONS, BEACH PRIMROSE  
 TREAT EXOTIC VINES

- NOTES**
1. PLANTING TECHNIQUE MUST BE APPROVED AND SUPERVISED BY NOMINATED SCC NATURAL AREAS OFFICER.
  2. UNDERTAKE WORK IN ACCORDANCE WITH ITT1866 - VEGETATION MANAGEMENT SERVICES SPECIFICATIONS
  3. IMPLEMENT A PLANT GROWN-ON CONTRACT - SOURCE PLANTS OF PROVENANCE TO THE SCC REGION
  4. IMPLEMENT AN APPROVED WEED MANAGEMENT PROGRAM ACROSS THE SITE
  5. LIMIT CLEARING NATIVE VEGETATION AS FAR AS PRACTICAL
  6. CAREFULLY CLEAR SURFACE ORGANIC MATERIAL AND SOIL/SAND FROM PATHWAY ALIGNMENT AND RE-SPREADING ON DISTURBED AREAS INCLUDING EMBANKMENTS TO ENCOURAGE NATIVE SEED REGENERATION.
  7. STABILISE DISTURBED AREAS AT RISK OF EROSION WITH JUTE NETTING AND COIR LOGS
  8. SET-OUT VIEW CORRIDORS AND BOUNDARIES BETWEEN DIFFERENT REVEGETATION TYPES
  9. SETOUT TREES FIRST AND INFILL WITH SHRUBS AND GROUNDCOVERS
  10. LAYER THE PLANTING WITH FRONTLINE COASTAL SPECIES TOWARDS THE OCEAN AND SECOND LINE COASTAL SPECIES IN MORE SHELTERED LOCATIONS
  11. PLANT SPECIES IN GROUPS OF 3,5 OR 7 IN A TRIANGULAR GRID
  12. THE DESIGN INTENT IS TO ACHIEVE THE APPEARANCE OF A NATURAL VEGETATION COMMUNITY
  13. SETOUT TO BE APPROVED ON SITE BY SCC LANDSCAPE ARCHITECT PRIOR TO PLANTING
  14. PLANT INTO NATIVE SOILS, DO NOT INTRODUCE GARDEN SOIL TO THE SITE
  15. MULCH RECOVERED FROM CLEARED (APPROVED) VEGETATION TO BE REUSED ON SITE. DO NOT IMPORT MULCH UNLESS APPROVED BY THE SUPERINTENDENT.

**NOTE:**  
 THE REGENERATION ZONES IDENTIFIED ON THESE PLANS ARE FROM THE WARANA FORESHORE BUSHLAND RESERVE REGENERATION WORKS PLAN 2014, WHICH SHOULD BE READ IN CONJUNCTION WITH THIS PLAN.  
 REFER TO THE WARANA FORESHORE BUSHLAND RESERVE REGENERATION WORKS PLAN 2014 FOR TECHNICAL WEED MANAGEMENT SPECIFICATIONS



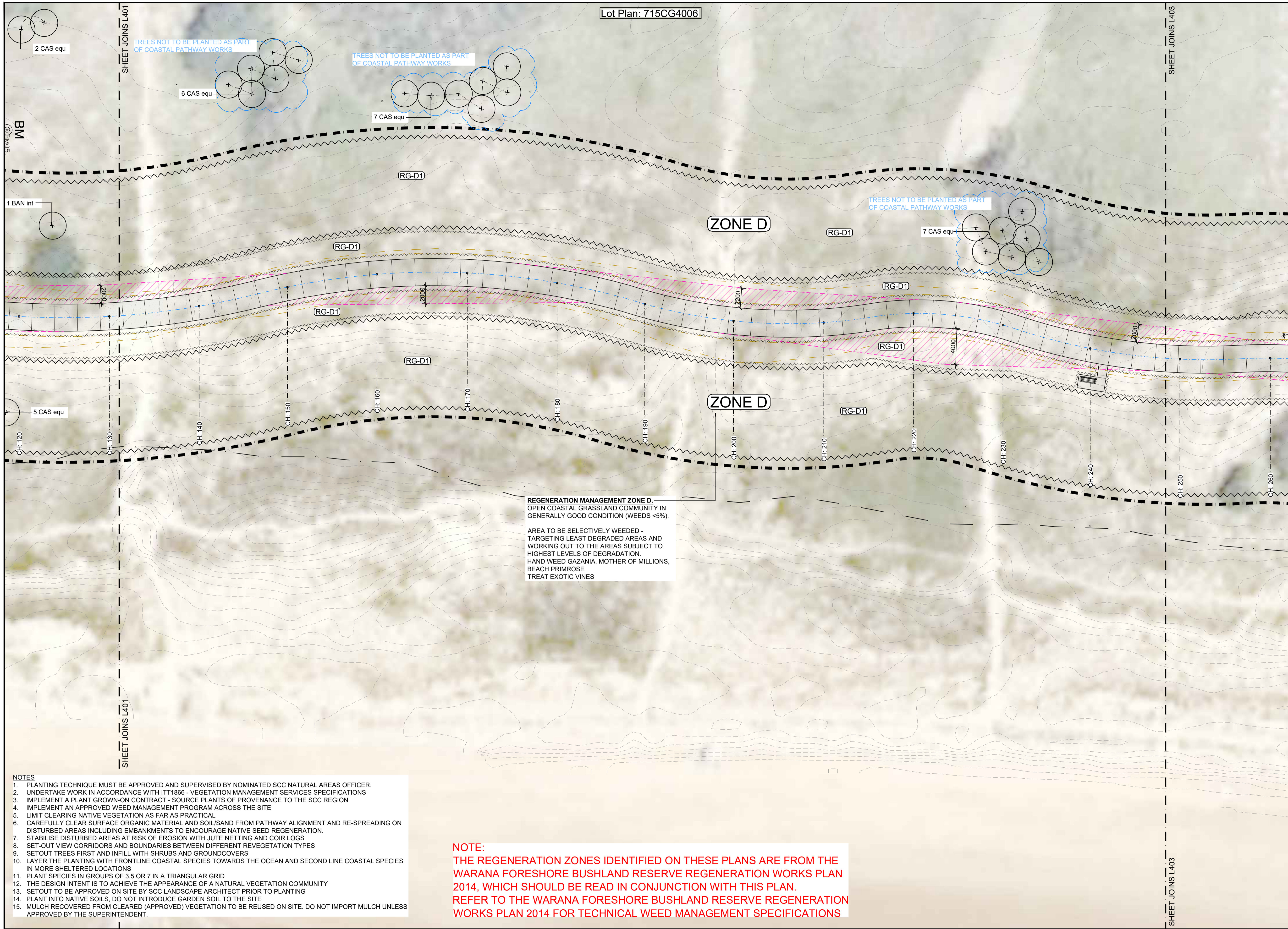
J	12/06/2024	BUSHLAND REGENERATION PLAN	CD		CD	
I	28/03/2024	REVISED PATH ALIGNMENT BETWEEN CH420-CH540 ISSUE	JB	HG	CD	
H	07/03/2024	REVISED CONSTRUCTION ISSUE	JB	HG	CD	A1 - 1:200
G	01/02/2024	ISSUED FOR CONSTRUCTION	JB	HG	CD	A3 - 1:400
Rv.	DATE	REVISIONS	DRAWN	CHECK 1	CHECK 2	SCALE



**Sunshine Coast COUNCIL**  
 Design & Placemaking Services | Landscape Architecture Services

**COASTAL PATHWAY BA233 TO BA229 WARANA**  
**BUSHLAND REGENERATION PLAN**

Design ID.	<b>P-K2705</b>
Sheet No. - Revision No.	<b>L401 J</b>



**REVEGETATION PLANTING PLAN LEGEND**

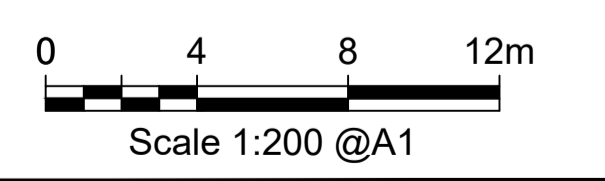
- EOW - PRIMARY EXTENT OF WORKS
- - - EXISTING RP PROPERTY BOUNDARY
- EXISTING TREE TO BE RETAINED AND PROTECTED. REFER TO TREE PROTECTION NOTES.
- PROPOSED TREES REFER TO 900 SERIES PLANS REFER TO SPECIFICATION REFER TO PLAN SCHEDULE
- BUSHLAND REGENERATION AREAS
- SIGHTLINES AREAS - LOW GROUNDCOVERS ONLY MAXIMUM MATURE HEIGHT 0.4M
- REGENERATION ZONE** REFER TO REGENERATION SCHEDULE REFER TO REGENERATION PLAN
- (RG-D1)** RG-D1 - REVEGETATION TYPE D1: GROUNDCOVER ONLY U.N.O. REFER TO REGENERATION SCHEDULE
- (RG-S1)** RG-S1 - REVEGETATION TYPE S1: GRASSES & GROUNDCOVER ONLY REFER TO REGENERATION SCHEDULE
- (RG-S2)** RG-S2 - REVEGETATION TYPE S2: TREES, SHRUBS, GROUNDCOVERS REFER TO REGENERATION SCHEDULE
- (RG-M1)** RG-M1 - REVEGETATION TYPE M1: GRASSES & GROUNDCOVER ONLY REFER TO REGENERATION SCHEDULE
- (RG-M2)** RG-M2 - REVEGETATION TYPE M2: TREES, SHRUBS, GROUNDCOVERS REFER TO REGENERATION SCHEDULE
- (RG-X1)** RG-X1 - REVEGETATION TYPE X1: GRASSES & GROUNDCOVER ONLY REFER TO REGENERATION SCHEDULE
- (RG-X2)** RG-X2 - REVEGETATION TYPE X2: TREES, SHRUBS, GROUNDCOVERS REFER TO REGENERATION SCHEDULE
- (RG-Y1)** RG-Y1 - REVEGETATION TYPE Y1: GRASSES & GROUNDCOVER ONLY REFER TO REGENERATION SCHEDULE
- (RG-Y2)** RG-Y2 - REVEGETATION TYPE Y2: TREES, SHRUBS, GROUNDCOVERS REFER TO REGENERATION SCHEDULE
- (RG-N1)** RG-N1 - REVEGETATION TYPE N1: GRASSES & GROUNDCOVER ONLY REFER TO REGENERATION SCHEDULE
- (RG-N2)** RG-N2 - REVEGETATION TYPE N2: TREES, SHRUBS, GROUNDCOVERS REFER TO REGENERATION SCHEDULE
- (RG-E1)** RG-E1 - REVEGETATION TYPE E1: GRASSES & GROUNDCOVER ONLY REFER TO REGENERATION SCHEDULE
- (RG-E2)** RG-E2 - REVEGETATION TYPE E2: TREES, SHRUBS, GROUNDCOVERS REFER TO REGENERATION SCHEDULE
- (RG-F1)** RG-F1 - REVEGETATION TYPE F1: GRASSES & GROUNDCOVER ONLY REFER TO REGENERATION SCHEDULE
- (RG-F2)** RG-F2 - REVEGETATION TYPE F2: TREES, SHRUBS, GROUNDCOVERS REFER TO REGENERATION SCHEDULE

**REGENERATION MANAGEMENT ZONE D.**  
 OPEN COASTAL GRASSLAND COMMUNITY IN GENERALLY GOOD CONDITION (WEEDS <5%).

AREA TO BE SELECTIVELY WEEDED - TARGETING LEAST DEGRADED AREAS AND WORKING OUT TO THE AREAS SUBJECT TO HIGHEST LEVELS OF DEGRADATION.  
 HAND WEED GAZANIA, MOTHER OF MILLIONS, BEACH PRIMROSE  
 TREAT EXOTIC VINES

- NOTES**
1. PLANTING TECHNIQUE MUST BE APPROVED AND SUPERVISED BY NOMINATED SCC NATURAL AREAS OFFICER.
  2. UNDERTAKE WORK IN ACCORDANCE WITH ITT1866 - VEGETATION MANAGEMENT SERVICES SPECIFICATIONS
  3. IMPLEMENT A PLANT GROWN-ON CONTRACT - SOURCE PLANTS OF PROVENANCE TO THE SCC REGION
  4. IMPLEMENT AN APPROVED WEED MANAGEMENT PROGRAM ACROSS THE SITE
  5. LIMIT CLEARING NATIVE VEGETATION AS FAR AS PRACTICAL
  6. CAREFULLY CLEAR SURFACE ORGANIC MATERIAL AND SOIL/SAND FROM PATHWAY ALIGNMENT AND RE-SPREADING ON DISTURBED AREAS INCLUDING EMBANKMENTS TO ENCOURAGE NATIVE SEED REGENERATION.
  7. STABILISE DISTURBED AREAS AT RISK OF EROSION WITH JUTE NETTING AND COIR LOGS
  8. SET-OUT VIEW CORRIDORS AND BOUNDARIES BETWEEN DIFFERENT REVEGETATION TYPES
  9. SETOUT TREES FIRST AND INFILL WITH SHRUBS AND GROUNDCOVERS
  10. LAYER THE PLANTING WITH FRONTLINE COASTAL SPECIES TOWARDS THE OCEAN AND SECOND LINE COASTAL SPECIES IN MORE SHELTERED LOCATIONS
  11. PLANT SPECIES IN GROUPS OF 3, 5 OR 7 IN A TRIANGULAR GRID
  12. THE DESIGN INTENT IS TO ACHIEVE THE APPEARANCE OF A NATURAL VEGETATION COMMUNITY
  13. SETOUT TO BE APPROVED ON SITE BY SCC LANDSCAPE ARCHITECT PRIOR TO PLANTING
  14. PLANT INTO NATIVE SOILS, DO NOT INTRODUCE GARDEN SOIL TO THE SITE
  15. MULCH RECOVERED FROM CLEARED (APPROVED) VEGETATION TO BE REUSED ON SITE. DO NOT IMPORT MULCH UNLESS APPROVED BY THE SUPERINTENDENT.

**NOTE:**  
 THE REGENERATION ZONES IDENTIFIED ON THESE PLANS ARE FROM THE WARANA FORESHORE BUSHLAND RESERVE REGENERATION WORKS PLAN 2014, WHICH SHOULD BE READ IN CONJUNCTION WITH THIS PLAN.  
 REFER TO THE WARANA FORESHORE BUSHLAND RESERVE REGENERATION WORKS PLAN 2014 FOR TECHNICAL WEED MANAGEMENT SPECIFICATIONS

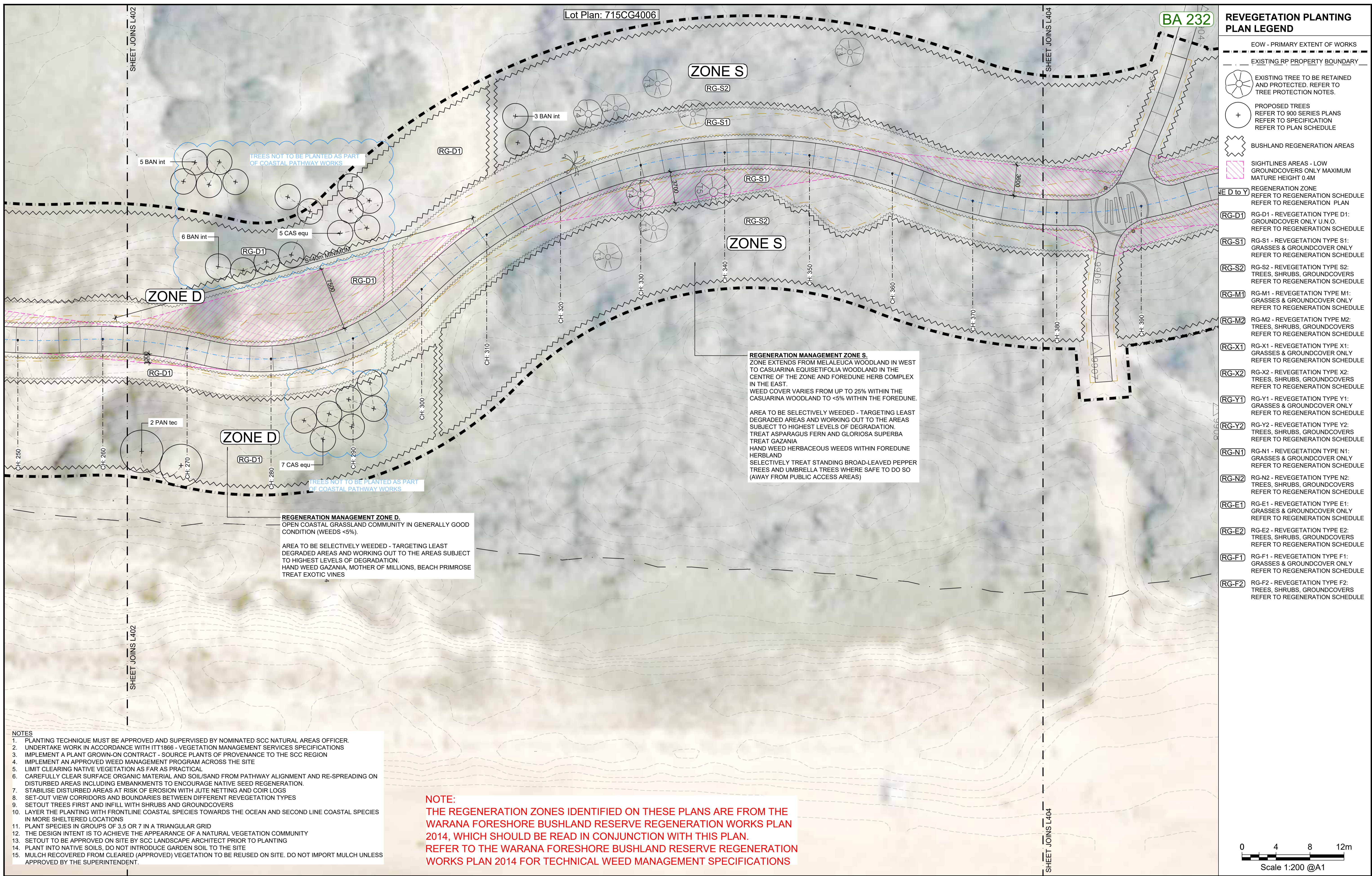


J	12/06/2024	BUSHLAND REGENERATION PLAN	CD		CD	
I	28/03/2024	REVISED PATH ALIGNMENT BETWEEN CH420-CH540 ISSUE	JB	HG	CD	
H	07/03/2024	REVISED CONSTRUCTION ISSUE	JB	HG	CD	A1 - 1:200
G	01/02/2024	ISSUED FOR CONSTRUCTION	JB	HG	CD	A3 - 1:400
Rv.	DATE	REVISIONS	DRAWN	CHECK 1	CHECK 2	SCALE

**Sunshine Coast COUNCIL**  
 Design & Placemaking Services | Landscape Architecture Services

**COASTAL PATHWAY BA233 TO BA229 WARANA**  
**BUSHLAND REGENERATION PLAN**

Design ID.  
**P-K2705**  
 Sheet No. - Revision No.  
**L402 J**



### REVEGETATION PLANTING PLAN LEGEND

- EOW - PRIMARY EXTENT OF WORKS
- - - EXISTING RP PROPERTY BOUNDARY
- (Tree symbol) EXISTING TREE TO BE RETAINED AND PROTECTED. REFER TO TREE PROTECTION NOTES.
- (+ symbol) PROPOSED TREES REFER TO 900 SERIES PLANS REFER TO SPECIFICATION REFER TO PLAN SCHEDULE
- (Hatched area) BUSHLAND REGENERATION AREAS
- (Pink hatched area) SIGHTLINES AREAS - LOW GROUNDCOVERS ONLY MAXIMUM MATURE HEIGHT 0.4M
- (Dashed line) REGENERATION ZONE REFER TO REGENERATION SCHEDULE REFER TO REGENERATION PLAN
- (RG-D1) RG-D1 - REVEGETATION TYPE D1: GROUNDCOVER ONLY U.N.O. REFER TO REGENERATION SCHEDULE
- (RG-S1) RG-S1 - REVEGETATION TYPE S1: GRASSES & GROUNDCOVER ONLY REFER TO REGENERATION SCHEDULE
- (RG-S2) RG-S2 - REVEGETATION TYPE S2: TREES, SHRUBS, GROUNDCOVERS REFER TO REGENERATION SCHEDULE
- (RG-M1) RG-M1 - REVEGETATION TYPE M1: GRASSES & GROUNDCOVER ONLY REFER TO REGENERATION SCHEDULE
- (RG-M2) RG-M2 - REVEGETATION TYPE M2: TREES, SHRUBS, GROUNDCOVERS REFER TO REGENERATION SCHEDULE
- (RG-X1) RG-X1 - REVEGETATION TYPE X1: GRASSES & GROUNDCOVER ONLY REFER TO REGENERATION SCHEDULE
- (RG-X2) RG-X2 - REVEGETATION TYPE X2: TREES, SHRUBS, GROUNDCOVERS REFER TO REGENERATION SCHEDULE
- (RG-Y1) RG-Y1 - REVEGETATION TYPE Y1: GRASSES & GROUNDCOVER ONLY REFER TO REGENERATION SCHEDULE
- (RG-Y2) RG-Y2 - REVEGETATION TYPE Y2: TREES, SHRUBS, GROUNDCOVERS REFER TO REGENERATION SCHEDULE
- (RG-N1) RG-N1 - REVEGETATION TYPE N1: GRASSES & GROUNDCOVER ONLY REFER TO REGENERATION SCHEDULE
- (RG-N2) RG-N2 - REVEGETATION TYPE N2: TREES, SHRUBS, GROUNDCOVERS REFER TO REGENERATION SCHEDULE
- (RG-E1) RG-E1 - REVEGETATION TYPE E1: GRASSES & GROUNDCOVER ONLY REFER TO REGENERATION SCHEDULE
- (RG-E2) RG-E2 - REVEGETATION TYPE E2: TREES, SHRUBS, GROUNDCOVERS REFER TO REGENERATION SCHEDULE
- (RG-F1) RG-F1 - REVEGETATION TYPE F1: GRASSES & GROUNDCOVER ONLY REFER TO REGENERATION SCHEDULE
- (RG-F2) RG-F2 - REVEGETATION TYPE F2: TREES, SHRUBS, GROUNDCOVERS REFER TO REGENERATION SCHEDULE

**REGENERATION MANAGEMENT ZONE S.**  
 ZONE EXTENDS FROM MELALEUCA WOODLAND IN WEST TO CASUARINA EQUISETIFOLIA WOODLAND IN THE CENTRE OF THE ZONE AND FOREDUNE HERB COMPLEX IN THE EAST.  
 WEED COVER VARIES FROM UP TO 25% WITHIN THE CASUARINA WOODLAND TO <5% WITHIN THE FOREDUNE.  
 AREA TO BE SELECTIVELY WEEDED - TARGETING LEAST DEGRADED AREAS AND WORKING OUT TO THE AREAS SUBJECT TO HIGHEST LEVELS OF DEGRADATION.  
 TREAT ASPARAGUS FERN AND GLORIOSA SUPERBA  
 TREAT GAZANIA  
 HAND WEED HERBACEOUS WEEDS WITHIN FOREDUNE HERBLAND  
 SELECTIVELY TREAT STANDING BROAD-LEAVED PEPPER TREES AND UMBRELLA TREES WHERE SAFE TO DO SO (AWAY FROM PUBLIC ACCESS AREAS)

**REGENERATION MANAGEMENT ZONE D.**  
 OPEN COASTAL GRASSLAND COMMUNITY IN GENERALLY GOOD CONDITION (WEEDS <5%).  
 AREA TO BE SELECTIVELY WEEDED - TARGETING LEAST DEGRADED AREAS AND WORKING OUT TO THE AREAS SUBJECT TO HIGHEST LEVELS OF DEGRADATION.  
 HAND WEED GAZANIA, MOTHER OF MILLIONS, BEACH PRIMROSE  
 TREAT EXOTIC VINES

- NOTES**
1. PLANTING TECHNIQUE MUST BE APPROVED AND SUPERVISED BY NOMINATED SCC NATURAL AREAS OFFICER.
  2. UNDERTAKE WORK IN ACCORDANCE WITH ITT1866 - VEGETATION MANAGEMENT SERVICES SPECIFICATIONS
  3. IMPLEMENT A PLANT GROWN-ON CONTRACT - SOURCE PLANTS OF PROVENANCE TO THE SCC REGION
  4. IMPLEMENT AN APPROVED WEED MANAGEMENT PROGRAM ACROSS THE SITE
  5. LIMIT CLEARING NATIVE VEGETATION AS FAR AS PRACTICAL
  6. CAREFULLY CLEAR SURFACE ORGANIC MATERIAL AND SOIL/SAND FROM PATHWAY ALIGNMENT AND RE-SPREADING ON DISTURBED AREAS INCLUDING EMBANKMENTS TO ENCOURAGE NATIVE SEED REGENERATION.
  7. STABILISE DISTURBED AREAS AT RISK OF EROSION WITH JUTE NETTING AND COIR LOGS
  8. SET-OUT VIEW CORRIDORS AND BOUNDARIES BETWEEN DIFFERENT REVEGETATION TYPES
  9. SETOUT TREES FIRST AND INFILL WITH SHRUBS AND GROUNDCOVERS
  10. LAYER THE PLANTING WITH FRONTLINE COASTAL SPECIES TOWARDS THE OCEAN AND SECOND LINE COASTAL SPECIES IN MORE SHELTERED LOCATIONS
  11. PLANT SPECIES IN GROUPS OF 3, 5 OR 7 IN A TRIANGULAR GRID
  12. THE DESIGN INTENT IS TO ACHIEVE THE APPEARANCE OF A NATURAL VEGETATION COMMUNITY
  13. SETOUT TO BE APPROVED ON SITE BY SCC LANDSCAPE ARCHITECT PRIOR TO PLANTING
  14. PLANT INTO NATIVE SOILS, DO NOT INTRODUCE GARDEN SOIL TO THE SITE
  15. MULCH RECOVERED FROM CLEARED (APPROVED) VEGETATION TO BE REUSED ON SITE. DO NOT IMPORT MULCH UNLESS APPROVED BY THE SUPERINTENDENT.

**NOTE:**  
 THE REGENERATION ZONES IDENTIFIED ON THESE PLANS ARE FROM THE WARANA FORESHORE BUSHLAND RESERVE REGENERATION WORKS PLAN 2014, WHICH SHOULD BE READ IN CONJUNCTION WITH THIS PLAN.  
 REFER TO THE WARANA FORESHORE BUSHLAND RESERVE REGENERATION WORKS PLAN 2014 FOR TECHNICAL WEED MANAGEMENT SPECIFICATIONS



J	12/06/2024	BUSHLAND REGENERATION PLAN	CD		CD
I	28/03/2024	REVISED PATH ALIGNMENT BETWEEN CH420-CH540 ISSUE	JB	HG	CD
H	07/03/2024	REVISED CONSTRUCTION ISSUE	JB	HG	CD A1 - 1:200
G	01/02/2024	ISSUED FOR CONSTRUCTION	JB	HG	CD A3 - 1:400
Rv.	DATE	REVISIONS	DRAWN	CHECK 1	CHECK 2

**Sunshine Coast COUNCIL**  
 Design & Placemaking Services | Landscape Architecture Services

**COASTAL PATHWAY BA233 TO BA229 WARANA**  
**BUSHLAND REGENERATION PLAN**

Design ID.  
**P-K2705**

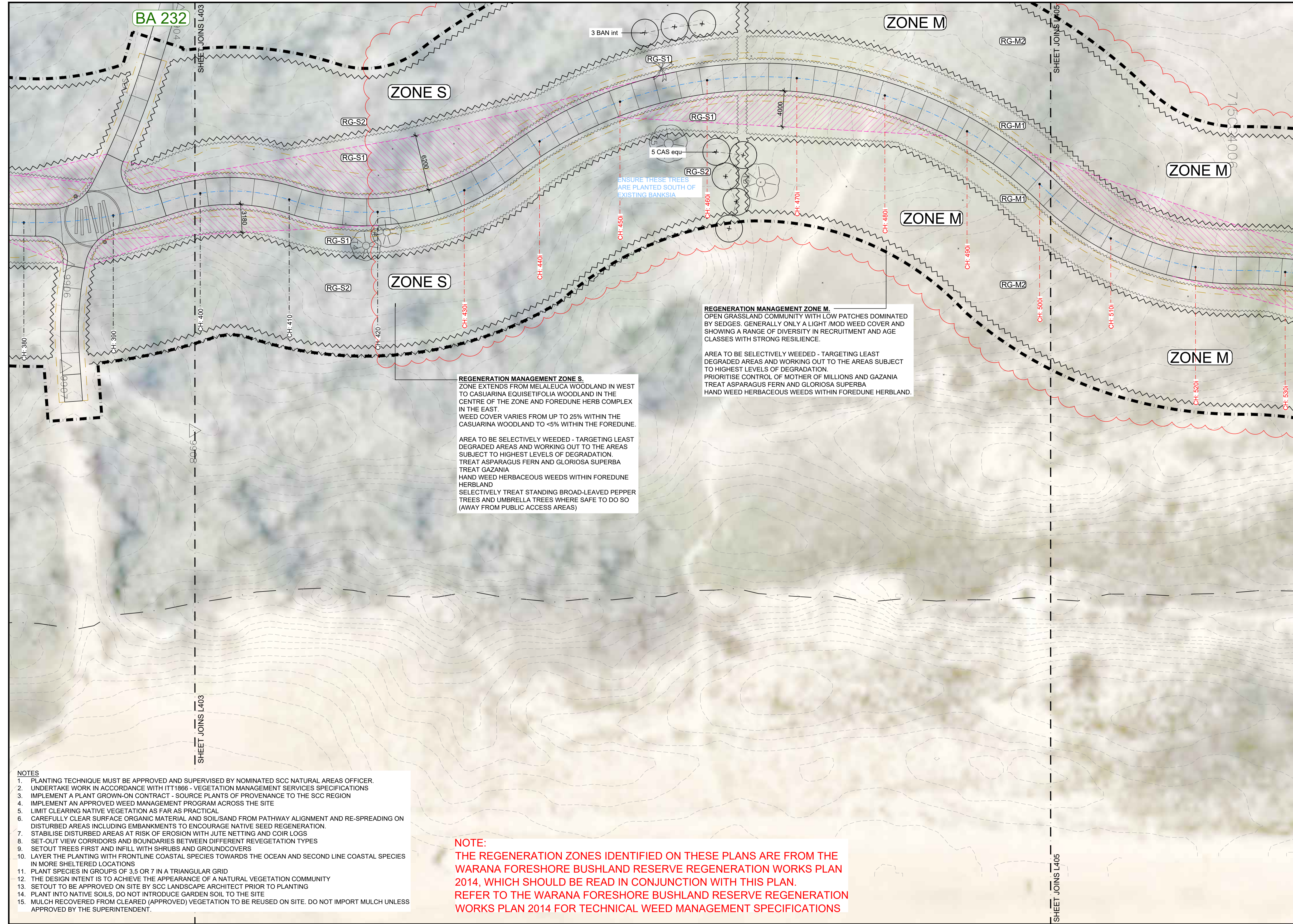
Sheet No. - Revision No.  
**L403 J**

FILE:O:\DesignApps\P-K2705 Coastal Pathway BA233 to BA229 Warana\_AutoCAD\AutoCAD\K2705 Coastal Pathway BA233 to BA229 Warana\_West Alignment 240417 - Copy.dwg DATE:11/06/2024 BY:cm

BA 232

SHEET JOINS L403

SHEET JOINS M405



### REVEGETATION PLANTING PLAN LEGEND

- EOW - PRIMARY EXTENT OF WORKS
- - - EXISTING RP PROPERTY BOUNDARY
- EXISTING TREE TO BE RETAINED AND PROTECTED. REFER TO TREE PROTECTION NOTES.
- PROPOSED TREES REFER TO 900 SERIES PLANS REFER TO SPECIFICATION REFER TO PLAN SCHEDULE
- BUSHLAND REGENERATION AREAS
- SIGHTLINES AREAS - LOW GROUNDCOVERS ONLY MAXIMUM MATURE HEIGHT 0.4M
- REGENERATION ZONE** REFER TO REGENERATION SCHEDULE REFER TO REGENERATION PLAN
- (RG-D1)** RG-D1 - REVEGETATION TYPE D1: GRASSES & GROUNDCOVER ONLY U.N.O. REFER TO REGENERATION SCHEDULE
- (RG-S1)** RG-S1 - REVEGETATION TYPE S1: GRASSES & GROUNDCOVER ONLY REFER TO REGENERATION SCHEDULE
- (RG-S2)** RG-S2 - REVEGETATION TYPE S2: TREES, SHRUBS, GROUNDCOVERS REFER TO REGENERATION SCHEDULE
- (RG-M1)** RG-M1 - REVEGETATION TYPE M1: GRASSES & GROUNDCOVER ONLY REFER TO REGENERATION SCHEDULE
- (RG-M2)** RG-M2 - REVEGETATION TYPE M2: TREES, SHRUBS, GROUNDCOVERS REFER TO REGENERATION SCHEDULE
- (RG-X1)** RG-X1 - REVEGETATION TYPE X1: GRASSES & GROUNDCOVER ONLY REFER TO REGENERATION SCHEDULE
- (RG-X2)** RG-X2 - REVEGETATION TYPE X2: TREES, SHRUBS, GROUNDCOVERS REFER TO REGENERATION SCHEDULE
- (RG-Y1)** RG-Y1 - REVEGETATION TYPE Y1: GRASSES & GROUNDCOVER ONLY REFER TO REGENERATION SCHEDULE
- (RG-Y2)** RG-Y2 - REVEGETATION TYPE Y2: TREES, SHRUBS, GROUNDCOVERS REFER TO REGENERATION SCHEDULE
- (RG-N1)** RG-N1 - REVEGETATION TYPE N1: GRASSES & GROUNDCOVER ONLY REFER TO REGENERATION SCHEDULE
- (RG-N2)** RG-N2 - REVEGETATION TYPE N2: TREES, SHRUBS, GROUNDCOVERS REFER TO REGENERATION SCHEDULE
- (RG-E1)** RG-E1 - REVEGETATION TYPE E1: GRASSES & GROUNDCOVER ONLY REFER TO REGENERATION SCHEDULE
- (RG-E2)** RG-E2 - REVEGETATION TYPE E2: TREES, SHRUBS, GROUNDCOVERS REFER TO REGENERATION SCHEDULE
- (RG-F1)** RG-F1 - REVEGETATION TYPE F1: GRASSES & GROUNDCOVER ONLY REFER TO REGENERATION SCHEDULE
- (RG-F2)** RG-F2 - REVEGETATION TYPE F2: TREES, SHRUBS, GROUNDCOVERS REFER TO REGENERATION SCHEDULE

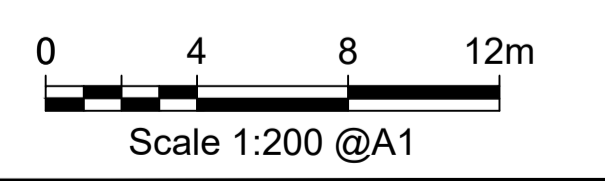
**REGENERATION MANAGEMENT ZONE M.**  
 OPEN GRASSLAND COMMUNITY WITH LOW PATCHES DOMINATED BY SEDGES. GENERALLY ONLY A LIGHT MOD WEED COVER AND SHOWING A RANGE OF DIVERSITY IN RECRUITMENT AND AGE CLASSES WITH STRONG RESILIENCE.  
 AREA TO BE SELECTIVELY WEEDED - TARGETING LEAST DEGRADED AREAS AND WORKING OUT TO THE AREAS SUBJECT TO HIGHEST LEVELS OF DEGRADATION.  
 PRIORITISE CONTROL OF MOTHER OF MILLIONS AND GAZANIA  
 TREAT ASPARAGUS FERN AND GLORIOSA SUPERBA  
 HAND WEED HERBACEOUS WEEDS WITHIN FOREDUNE HERBLAND.

**REGENERATION MANAGEMENT ZONE S.**  
 ZONE EXTENDS FROM MELALEUCA WOODLAND IN WEST TO CASUARINA EQUISETIFOLIA WOODLAND IN THE CENTRE OF THE ZONE AND FOREDUNE HERB COMPLEX IN THE EAST.  
 WEED COVER VARIES FROM UP TO 25% WITHIN THE CASUARINA WOODLAND TO <5% WITHIN THE FOREDUNE.  
 AREA TO BE SELECTIVELY WEEDED - TARGETING LEAST DEGRADED AREAS AND WORKING OUT TO THE AREAS SUBJECT TO HIGHEST LEVELS OF DEGRADATION.  
 TREAT ASPARAGUS FERN AND GLORIOSA SUPERBA  
 TREAT GAZANIA  
 HAND WEED HERBACEOUS WEEDS WITHIN FOREDUNE HERBLAND  
 SELECTIVELY TREAT STANDING BROAD-LEAVED PEPPER TREES AND UMBRELLA TREES WHERE SAFE TO DO SO (AWAY FROM PUBLIC ACCESS AREAS)

ENSURE THESE TREES ARE PLANTED SOUTH OF EXISTING BANKSIA

- NOTES**
1. PLANTING TECHNIQUE MUST BE APPROVED AND SUPERVISED BY NOMINATED SCC NATURAL AREAS OFFICER.
  2. UNDERTAKE WORK IN ACCORDANCE WITH ITT1866 - VEGETATION MANAGEMENT SERVICES SPECIFICATIONS
  3. IMPLEMENT A PLANT GROWN-ON CONTRACT - SOURCE PLANTS OF PROVENANCE TO THE SCC REGION
  4. IMPLEMENT AN APPROVED WEED MANAGEMENT PROGRAM ACROSS THE SITE
  5. LIMIT CLEARING NATIVE VEGETATION AS FAR AS PRACTICAL
  6. CAREFULLY CLEAR SURFACE ORGANIC MATERIAL AND SOIL/SAND FROM PATHWAY ALIGNMENT AND RE-SPREADING ON DISTURBED AREAS INCLUDING EMBANKMENTS TO ENCOURAGE NATIVE SEED REGENERATION.
  7. STABILISE DISTURBED AREAS AT RISK OF EROSION WITH JUTE NETTING AND COIR LOGS
  8. SET-OUT VIEW CORRIDORS AND BOUNDARIES BETWEEN DIFFERENT REVEGETATION TYPES
  9. SETOUT TREES FIRST AND INFILL WITH SHRUBS AND GROUNDCOVERS
  10. LAYER THE PLANTING WITH FRONTLINE COASTAL SPECIES TOWARDS THE OCEAN AND SECOND LINE COASTAL SPECIES IN MORE SHELTERED LOCATIONS
  11. PLANT SPECIES IN GROUPS OF 3, 5 OR 7 IN A TRIANGULAR GRID
  12. THE DESIGN INTENT IS TO ACHIEVE THE APPEARANCE OF A NATURAL VEGETATION COMMUNITY
  13. SETOUT TO BE APPROVED ON SITE BY SCC LANDSCAPE ARCHITECT PRIOR TO PLANTING
  14. PLANT INTO NATIVE SOILS, DO NOT INTRODUCE GARDEN SOIL TO THE SITE
  15. MULCH RECOVERED FROM CLEARED (APPROVED) VEGETATION TO BE REUSED ON SITE. DO NOT IMPORT MULCH UNLESS APPROVED BY THE SUPERINTENDENT.

**NOTE:**  
 THE REGENERATION ZONES IDENTIFIED ON THESE PLANS ARE FROM THE WARANA FORESHORE BUSHLAND RESERVE REGENERATION WORKS PLAN 2014, WHICH SHOULD BE READ IN CONJUNCTION WITH THIS PLAN.  
 REFER TO THE WARANA FORESHORE BUSHLAND RESERVE REGENERATION WORKS PLAN 2014 FOR TECHNICAL WEED MANAGEMENT SPECIFICATIONS



J	12/06/2024	BUSHLAND REGENERATION PLAN	CD		CD
I	28/03/2024	REVISED PATH ALIGNMENT BETWEEN CH420-CH540 ISSUE	JB	HG	CD
H	07/03/2024	REVISED CONSTRUCTION ISSUE	JB	HG	CD A1 - 1:200
G	01/02/2024	ISSUED FOR CONSTRUCTION	JB	HG	CD A3 - 1:400
Rv.	DATE	REVISIONS	DRAWN	CHECK 1	CHECK 2

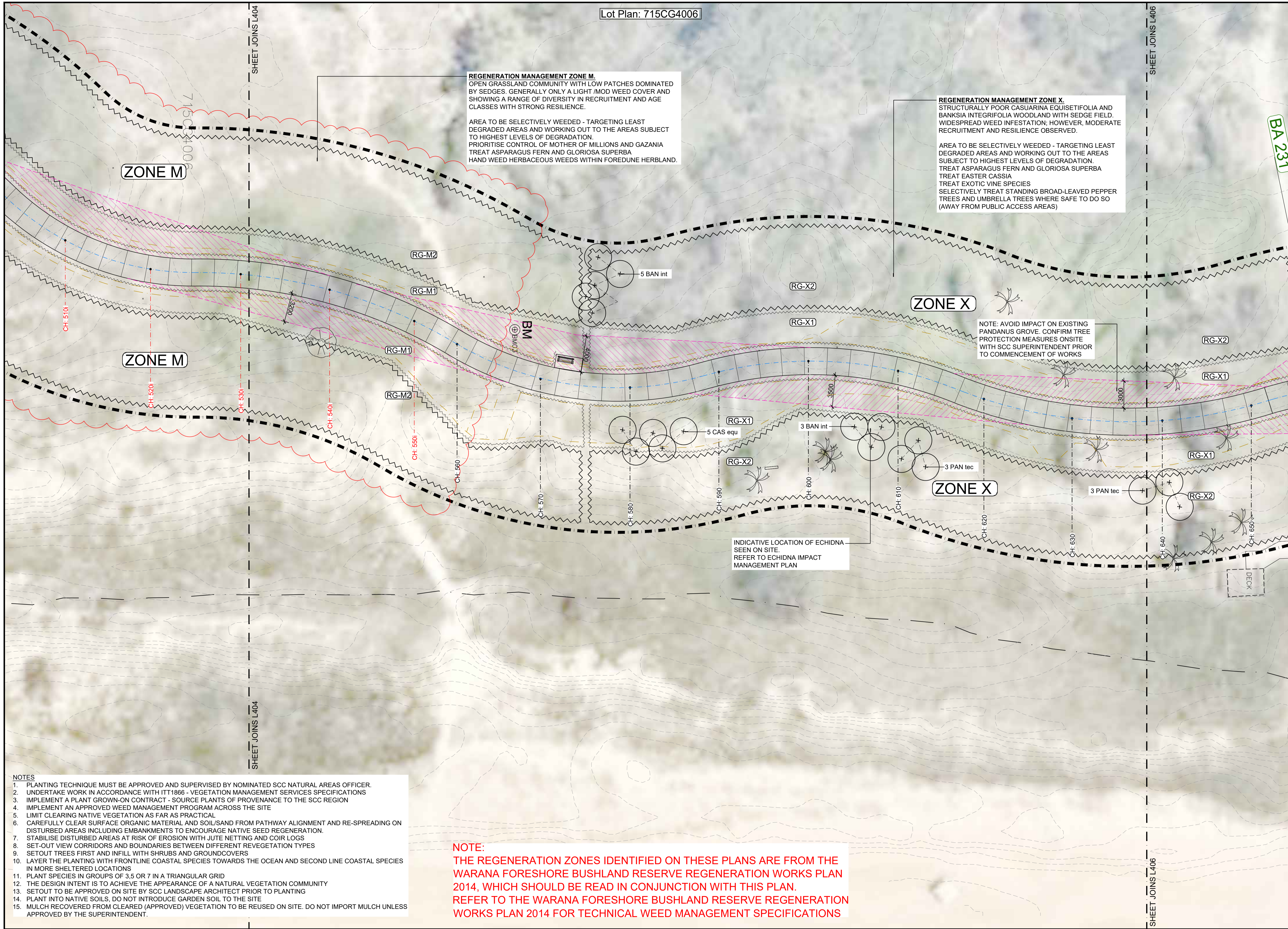
Design & Placemaking Services | Landscape Architecture Services

## COASTAL PATHWAY BA233 TO BA229 WARANA

### BUSHLAND REGENERATION PLAN

Design ID.  
**P-K2705**  
 Sheet No. - Revision No.  
**L404 J**

FILE:O:\DesignApps\P-K2705 Coastal Pathway BA233 to BA229 Warana\_AutoCAD\AutoCAD\K2705 Coastal Pathway BA233 to BA229 Warana\_West Alignment 240417 - Copy.dwg DATE:11/June/2024 BY:cm



**REGENERATION MANAGEMENT ZONE M.**  
 OPEN GRASSLAND COMMUNITY WITH LOW PATCHES DOMINATED BY SEDGES. GENERALLY ONLY A LIGHT /MOD WEED COVER AND SHOWING A RANGE OF DIVERSITY IN RECRUITMENT AND AGE CLASSES WITH STRONG RESILIENCE.  
 AREA TO BE SELECTIVELY WEEDED - TARGETING LEAST DEGRADED AREAS AND WORKING OUT TO THE AREAS SUBJECT TO HIGHEST LEVELS OF DEGRADATION.  
 PRIORITISE CONTROL OF MOTHER OF MILLIONS AND GAZANIA  
 TREAT ASPARAGUS FERN AND GLORIOSA SUPERBA  
 HAND WEEED HERBACEOUS WEEDS WITHIN FOREDUNE HERBLAND.

**REGENERATION MANAGEMENT ZONE X.**  
 STRUCTURALLY POOR CASUARINA EQUITIFOLIA AND BANKSIA INTEGRIFOLIA WOODLAND WITH SEDGE FIELD. WIDESPREAD WEED INFESTATION; HOWEVER, MODERATE RECRUITMENT AND RESILIENCE OBSERVED.  
 AREA TO BE SELECTIVELY WEEDED - TARGETING LEAST DEGRADED AREAS AND WORKING OUT TO THE AREAS SUBJECT TO HIGHEST LEVELS OF DEGRADATION.  
 TREAT ASPARAGUS FERN AND GLORIOSA SUPERBA  
 TREAT EASTER CASSIA  
 TREAT EXOTIC VINE SPECIES  
 SELECTIVELY TREAT STANDING BROAD-LEAVED PEPPER TREES AND UMBRELLA TREES WHERE SAFE TO DO SO (AWAY FROM PUBLIC ACCESS AREAS)

NOTE: AVOID IMPACT ON EXISTING PANDANUS GROVE. CONFIRM TREE PROTECTION MEASURES ONSITE WITH SCC SUPERINTENDENT PRIOR TO COMMENCEMENT OF WORKS

INDICATIVE LOCATION OF ECHIDNA SEEN ON SITE. REFER TO ECHIDNA IMPACT MANAGEMENT PLAN

**REVEGETATION PLANTING PLAN LEGEND**

- EOW - PRIMARY EXTENT OF WORKS
- - - EXISTING RP PROPERTY BOUNDARY
- EXISTING TREE TO BE RETAINED AND PROTECTED. REFER TO TREE PROTECTION NOTES.
- PROPOSED TREES  
REFER TO 900 SERIES PLANS  
REFER TO SPECIFICATION  
REFER TO PLAN SCHEDULE
- BUSHLAND REGENERATION AREAS
- SIGHTLINES AREAS - LOW GROUNDCOVERS ONLY MAXIMUM MATURE HEIGHT 0.4M
- RE D to Y** REGENERATION ZONE  
REFER TO REGENERATION SCHEDULE  
REFER TO REGENERATION PLAN
- (RG-D1)** RG-D1 - REVEGETATION TYPE D1:  
GROUNDCOVER ONLY U.N.O.  
REFER TO REGENERATION SCHEDULE
- (RG-S1)** RG-S1 - REVEGETATION TYPE S1:  
GRASSES & GROUNDCOVER ONLY  
REFER TO REGENERATION SCHEDULE
- (RG-S2)** RG-S2 - REVEGETATION TYPE S2:  
TREES, SHRUBS, GROUNDCOVERS  
REFER TO REGENERATION SCHEDULE
- (RG-M1)** RG-M1 - REVEGETATION TYPE M1:  
GRASSES & GROUNDCOVER ONLY  
REFER TO REGENERATION SCHEDULE
- (RG-M2)** RG-M2 - REVEGETATION TYPE M2:  
TREES, SHRUBS, GROUNDCOVERS  
REFER TO REGENERATION SCHEDULE
- (RG-X1)** RG-X1 - REVEGETATION TYPE X1:  
GRASSES & GROUNDCOVER ONLY  
REFER TO REGENERATION SCHEDULE
- (RG-X2)** RG-X2 - REVEGETATION TYPE X2:  
TREES, SHRUBS, GROUNDCOVERS  
REFER TO REGENERATION SCHEDULE
- (RG-Y1)** RG-Y1 - REVEGETATION TYPE Y1:  
GRASSES & GROUNDCOVER ONLY  
REFER TO REGENERATION SCHEDULE
- (RG-Y2)** RG-Y2 - REVEGETATION TYPE Y2:  
TREES, SHRUBS, GROUNDCOVERS  
REFER TO REGENERATION SCHEDULE
- (RG-N1)** RG-N1 - REVEGETATION TYPE N1:  
GRASSES & GROUNDCOVER ONLY  
REFER TO REGENERATION SCHEDULE
- (RG-N2)** RG-N2 - REVEGETATION TYPE N2:  
TREES, SHRUBS, GROUNDCOVERS  
REFER TO REGENERATION SCHEDULE
- (RG-E1)** RG-E1 - REVEGETATION TYPE E1:  
GRASSES & GROUNDCOVER ONLY  
REFER TO REGENERATION SCHEDULE
- (RG-E2)** RG-E2 - REVEGETATION TYPE E2:  
TREES, SHRUBS, GROUNDCOVERS  
REFER TO REGENERATION SCHEDULE
- (RG-F1)** RG-F1 - REVEGETATION TYPE F1:  
GRASSES & GROUNDCOVER ONLY  
REFER TO REGENERATION SCHEDULE
- (RG-F2)** RG-F2 - REVEGETATION TYPE F2:  
TREES, SHRUBS, GROUNDCOVERS  
REFER TO REGENERATION SCHEDULE

- NOTES**
1. PLANTING TECHNIQUE MUST BE APPROVED AND SUPERVISED BY NOMINATED SCC NATURAL AREAS OFFICER.
  2. UNDERTAKE WORK IN ACCORDANCE WITH ITT1866 - VEGETATION MANAGEMENT SERVICES SPECIFICATIONS
  3. IMPLEMENT A PLANT GROWN-ON CONTRACT - SOURCE PLANTS OF PROVENANCE TO THE SCC REGION
  4. IMPLEMENT AN APPROVED WEED MANAGEMENT PROGRAM ACROSS THE SITE
  5. LIMIT CLEARING NATIVE VEGETATION AS FAR AS PRACTICAL
  6. CAREFULLY CLEAR SURFACE ORGANIC MATERIAL AND SOIL/SAND FROM PATHWAY ALIGNMENT AND RE-SPREADING ON DISTURBED AREAS INCLUDING EMBANKMENTS TO ENCOURAGE NATIVE SEED REGENERATION.
  7. STABILISE DISTURBED AREAS AT RISK OF EROSION WITH JUTE NETTING AND COIR LOGS
  8. SET-OUT VIEW CORRIDORS AND BOUNDARIES BETWEEN DIFFERENT REVEGETATION TYPES
  9. SETOUT TREES FIRST AND INFILL WITH SHRUBS AND GROUNDCOVERS
  10. LAYER THE PLANTING WITH FRONTLINE COASTAL SPECIES TOWARDS THE OCEAN AND SECOND LINE COASTAL SPECIES IN MORE SHELTERED LOCATIONS
  11. PLANT SPECIES IN GROUPS OF 3,5 OR 7 IN A TRIANGULAR GRID
  12. THE DESIGN INTENT IS TO ACHIEVE THE APPEARANCE OF A NATURAL VEGETATION COMMUNITY
  13. SETOUT TO BE APPROVED ON SITE BY SCC LANDSCAPE ARCHITECT PRIOR TO PLANTING
  14. PLANT INTO NATIVE SOILS, DO NOT INTRODUCE GARDEN SOIL TO THE SITE
  15. MULCH RECOVERED FROM CLEARED (APPROVED) VEGETATION TO BE REUSED ON SITE. DO NOT IMPORT MULCH UNLESS APPROVED BY THE SUPERINTENDENT.

**NOTE:**  
 THE REGENERATION ZONES IDENTIFIED ON THESE PLANS ARE FROM THE WARANA FORESHORE BUSHLAND RESERVE REGENERATION WORKS PLAN 2014, WHICH SHOULD BE READ IN CONJUNCTION WITH THIS PLAN.  
 REFER TO THE WARANA FORESHORE BUSHLAND RESERVE REGENERATION WORKS PLAN 2014 FOR TECHNICAL WEED MANAGEMENT SPECIFICATIONS



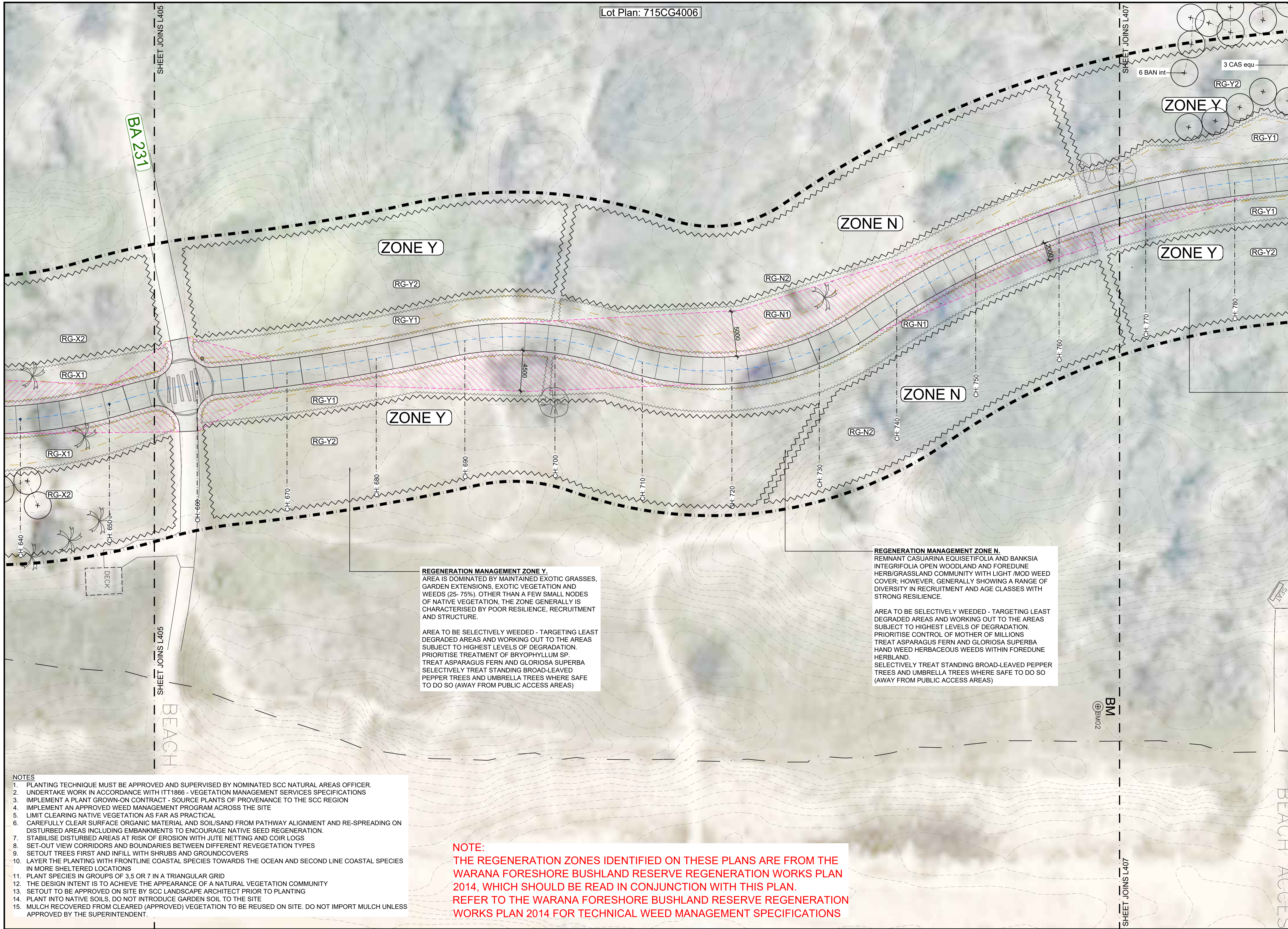
J	12/06/2024	BUSHLAND REGENERATION PLAN	CD		CD		
I	28/03/2024	REVISED PATH ALIGNMENT BETWEEN CH420-CH540 ISSUE	JB	HG	CD		
H	07/03/2024	REVISED CONSTRUCTION ISSUE	JB	HG	CD		A1 - 1:200
G	01/02/2024	ISSUED FOR CONSTRUCTION	JB	HG	CD		A3 - 1:400
Rv.	DATE	REVISIONS	DRAWN	CHECK 1	CHECK 2	SCALE	

**Sunshine Coast COUNCIL**  
 Design & Placemaking Services | Landscape Architecture Services

**COASTAL PATHWAY BA233 TO BA229 WARANA**  
**BUSHLAND REGENERATION PLAN**

Design ID.  
**P-K2705**

Sheet No. - Revision No.  
**L405 J**



REVEGETATION PLANTING PLAN LEGEND

- EOW - PRIMARY EXTENT OF WORKS
- - - EXISTING RP PROPERTY BOUNDARY
- (Tree symbol) EXISTING TREE TO BE RETAINED AND PROTECTED. REFER TO TREE PROTECTION NOTES.
- (+ symbol) PROPOSED TREES REFER TO 900 SERIES PLANS REFER TO SPECIFICATION REFER TO PLAN SCHEDULE
- (Dotted area) BUSHLAND REGENERATION AREAS
- (Pink hatched area) SIGHTLINES AREAS - LOW GROUNDCOVERS ONLY MAXIMUM MATURE HEIGHT 0.4M
- (Dashed line) REGENERATION ZONE REFER TO REGENERATION SCHEDULE REFER TO REGENERATION PLAN
- (RG-D1) RG-D1 - REVEGETATION TYPE D1: GROUNDCOVER ONLY U.N.O. REFER TO REGENERATION SCHEDULE
- (RG-S1) RG-S1 - REVEGETATION TYPE S1: GRASSES & GROUNDCOVER ONLY REFER TO REGENERATION SCHEDULE
- (RG-S2) RG-S2 - REVEGETATION TYPE S2: TREES, SHRUBS, GROUNDCOVERS REFER TO REGENERATION SCHEDULE
- (RG-M1) RG-M1 - REVEGETATION TYPE M1: GRASSES & GROUNDCOVER ONLY REFER TO REGENERATION SCHEDULE
- (RG-M2) RG-M2 - REVEGETATION TYPE M2: TREES, SHRUBS, GROUNDCOVERS REFER TO REGENERATION SCHEDULE
- (RG-X1) RG-X1 - REVEGETATION TYPE X1: GRASSES & GROUNDCOVER ONLY REFER TO REGENERATION SCHEDULE
- (RG-X2) RG-X2 - REVEGETATION TYPE X2: TREES, SHRUBS, GROUNDCOVERS REFER TO REGENERATION SCHEDULE
- (RG-Y1) RG-Y1 - REVEGETATION TYPE Y1: GRASSES & GROUNDCOVER ONLY REFER TO REGENERATION SCHEDULE
- (RG-Y2) RG-Y2 - REVEGETATION TYPE Y2: TREES, SHRUBS, GROUNDCOVERS REFER TO REGENERATION SCHEDULE
- (RG-N1) RG-N1 - REVEGETATION TYPE N1: GRASSES & GROUNDCOVER ONLY REFER TO REGENERATION SCHEDULE
- (RG-N2) RG-N2 - REVEGETATION TYPE N2: TREES, SHRUBS, GROUNDCOVERS REFER TO REGENERATION SCHEDULE
- (RG-E1) RG-E1 - REVEGETATION TYPE E1: GRASSES & GROUNDCOVER ONLY REFER TO REGENERATION SCHEDULE
- (RG-E2) RG-E2 - REVEGETATION TYPE E2: TREES, SHRUBS, GROUNDCOVERS REFER TO REGENERATION SCHEDULE
- (RG-F1) RG-F1 - REVEGETATION TYPE F1: GRASSES & GROUNDCOVER ONLY REFER TO REGENERATION SCHEDULE
- (RG-F2) RG-F2 - REVEGETATION TYPE F2: TREES, SHRUBS, GROUNDCOVERS REFER TO REGENERATION SCHEDULE

**REGENERATION MANAGEMENT ZONE Y.**  
 AREA IS DOMINATED BY MAINTAINED EXOTIC GRASSES, GARDEN EXTENSIONS, EXOTIC VEGETATION AND WEEDS (25- 75%), OTHER THAN A FEW SMALL NODES OF NATIVE VEGETATION, THE ZONE GENERALLY IS CHARACTERISED BY POOR RESILIENCE, RECRUITMENT AND STRUCTURE.

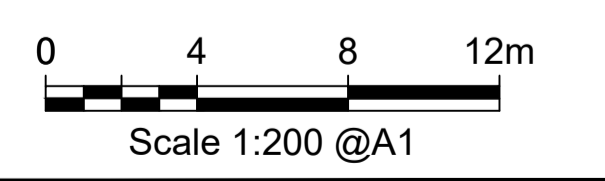
AREA TO BE SELECTIVELY WEEDED - TARGETING LEAST DEGRADED AREAS AND WORKING OUT TO THE AREAS SUBJECT TO HIGHEST LEVELS OF DEGRADATION. PRIORITISE TREATMENT OF BRYOPHYLLUM SP. TREAT ASPARAGUS FERN AND GLORIOSA SUPERBA SELECTIVELY TREAT STANDING BROAD-LEAVED PEPPER TREES AND UMBRELLA TREES WHERE SAFE TO DO SO (AWAY FROM PUBLIC ACCESS AREAS)

**REGENERATION MANAGEMENT ZONE N.**  
 REMNANT CASUARINA EQUISETIFOLIA AND BANKSIA INTEGRIFOLIA OPEN WOODLAND AND FOREDUNE HERB/GRASSLAND COMMUNITY WITH LIGHT /MOD WEED COVER; HOWEVER, GENERALLY SHOWING A RANGE OF DIVERSITY IN RECRUITMENT AND AGE CLASSES WITH STRONG RESILIENCE.

AREA TO BE SELECTIVELY WEEDED - TARGETING LEAST DEGRADED AREAS AND WORKING OUT TO THE AREAS SUBJECT TO HIGHEST LEVELS OF DEGRADATION. PRIORITISE CONTROL OF MOTHER OF MILLIONS TREAT ASPARAGUS FERN AND GLORIOSA SUPERBA HAND WEED HERBACEOUS WEEDS WITHIN FOREDUNE HERBLAND. SELECTIVELY TREAT STANDING BROAD-LEAVED PEPPER TREES AND UMBRELLA TREES WHERE SAFE TO DO SO (AWAY FROM PUBLIC ACCESS AREAS)

- NOTES**
1. PLANTING TECHNIQUE MUST BE APPROVED AND SUPERVISED BY NOMINATED SCC NATURAL AREAS OFFICER.
  2. UNDERTAKE WORK IN ACCORDANCE WITH IT1866 - VEGETATION MANAGEMENT SERVICES SPECIFICATIONS
  3. IMPLEMENT A PLANT GROWN-ON CONTRACT - SOURCE PLANTS OF PROVENANCE TO THE SCC REGION
  4. IMPLEMENT AN APPROVED WEED MANAGEMENT PROGRAM ACROSS THE SITE
  5. LIMIT CLEARING NATIVE VEGETATION AS FAR AS PRACTICAL
  6. CAREFULLY CLEAR SURFACE ORGANIC MATERIAL AND SOIL/SAND FROM PATHWAY ALIGNMENT AND RE-SPREADING ON DISTURBED AREAS INCLUDING EMBANKMENTS TO ENCOURAGE NATIVE SEED REGENERATION.
  7. STABILISE DISTURBED AREAS AT RISK OF EROSION WITH JUTE NETTING AND COIR LOGS
  8. SET-OUT VIEW CORRIDORS AND BOUNDARIES BETWEEN DIFFERENT REVEGETATION TYPES
  9. SETOUT TREES FIRST AND INFILL WITH SHRUBS AND GROUNDCOVERS
  10. LAYER THE PLANTING WITH FRONTLINE COASTAL SPECIES TOWARDS THE OCEAN AND SECOND LINE COASTAL SPECIES IN MORE SHELTERED LOCATIONS
  11. PLANT SPECIES IN GROUPS OF 3.5 OR 7 IN A TRIANGULAR GRID
  12. THE DESIGN INTENT IS TO ACHIEVE THE APPEARANCE OF A NATURAL VEGETATION COMMUNITY
  13. SETOUT TO BE APPROVED ON SITE BY SCC LANDSCAPE ARCHITECT PRIOR TO PLANTING
  14. PLANT INTO NATIVE SOILS, DO NOT INTRODUCE GARDEN SOIL TO THE SITE
  15. MULCH RECOVERED FROM CLEARED (APPROVED) VEGETATION TO BE REUSED ON SITE. DO NOT IMPORT MULCH UNLESS APPROVED BY THE SUPERINTENDENT.

**NOTE:**  
 THE REGENERATION ZONES IDENTIFIED ON THESE PLANS ARE FROM THE WARANA FORESHORE BUSHLAND RESERVE REGENERATION WORKS PLAN 2014, WHICH SHOULD BE READ IN CONJUNCTION WITH THIS PLAN. REFER TO THE WARANA FORESHORE BUSHLAND RESERVE REGENERATION WORKS PLAN 2014 FOR TECHNICAL WEED MANAGEMENT SPECIFICATIONS



Rv.	DATE	REVISIONS	DRAWN	CHECK 1	CHECK 2	SCALE
J	12/06/2024	BUSHLAND REGENERATION PLAN	CD		CD	
I	28/03/2024	REVISED PATH ALIGNMENT BETWEEN CH420-CH540 ISSUE	JB	HG	CD	
H	07/03/2024	REVISED CONSTRUCTION ISSUE	JB	HG	CD	A1 - 1:200
G	01/02/2024	ISSUED FOR CONSTRUCTION	JB	HG	CD	A3 - 1:400


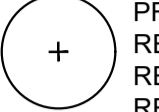

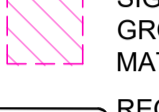
**Sunshine Coast COUNCIL**  
 Design & Placemaking Services | Landscape Architecture Services

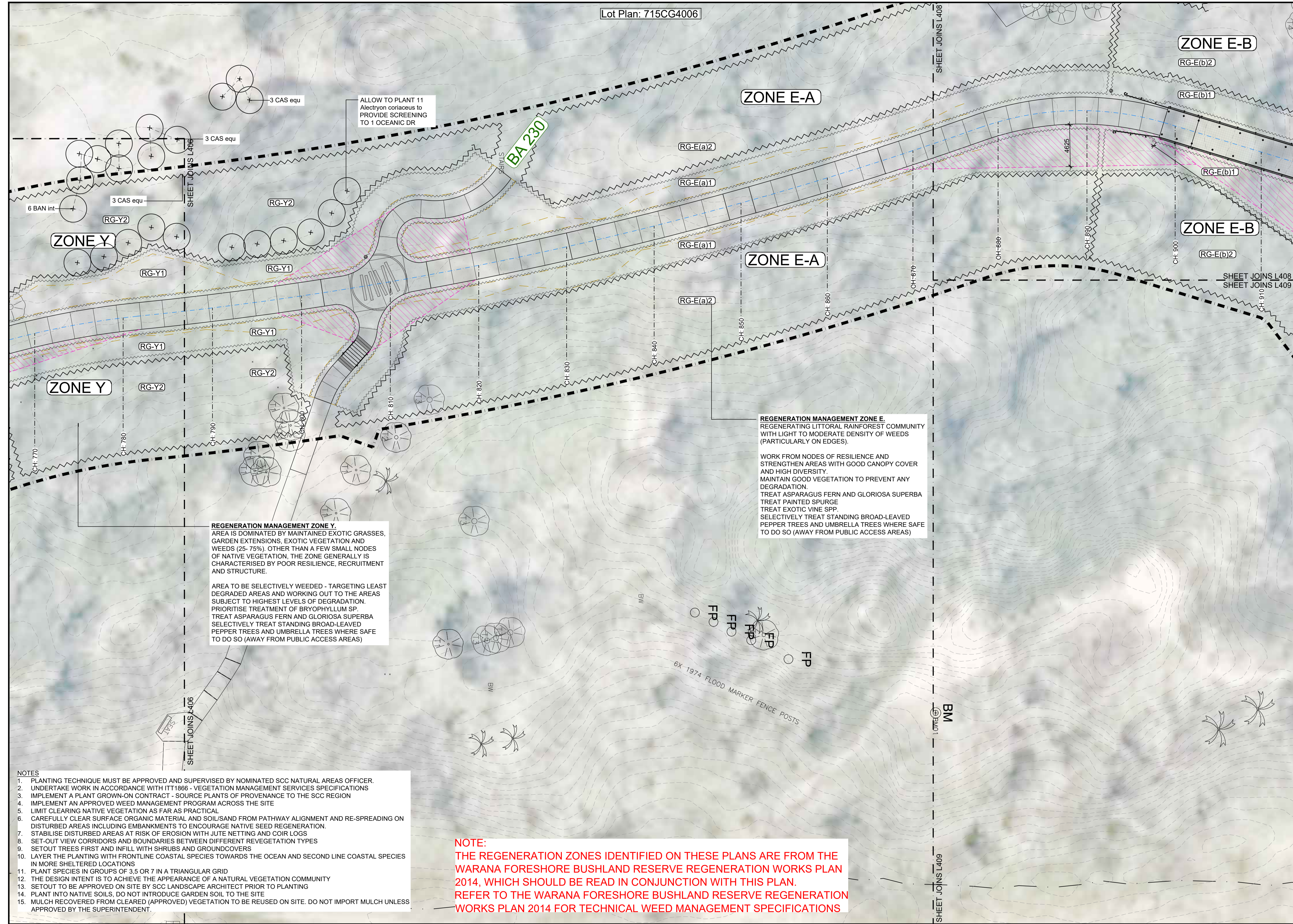
**COASTAL PATHWAY BA233 TO BA229 WARANA**  
**BUSHLAND REGENERATION PLAN**

Design ID.	<b>P-K2705</b>
Sheet No. - Revision No.	<b>L406 J</b>



**REVEGETATION PLANTING PLAN LEGEND**

- EOW - PRIMARY EXTENT OF WORKS
- - - EXISTING RP PROPERTY BOUNDARY
-  EXISTING TREE TO BE RETAINED AND PROTECTED. REFER TO TREE PROTECTION NOTES.
-  PROPOSED TREES REFER TO 900 SERIES PLANS REFER TO SPECIFICATION REFER TO PLAN SCHEDULE
-  BUSHLAND REGENERATION AREAS
-  SIGHTLINES AREAS - LOW GROUNDCOVERS ONLY MAXIMUM MATURE HEIGHT 0.4M
- REGENERATION ZONE** REFER TO REGENERATION SCHEDULE REFER TO REGENERATION PLAN
- (RG-D1)** RG-D1 - REVEGETATION TYPE D1: GRASSES & GROUNDCOVER ONLY U.N.O. REFER TO REGENERATION SCHEDULE
- (RG-S1)** RG-S1 - REVEGETATION TYPE S1: GRASSES & GROUNDCOVER ONLY REFER TO REGENERATION SCHEDULE
- (RG-S2)** RG-S2 - REVEGETATION TYPE S2: TREES, SHRUBS, GROUNDCOVERS REFER TO REGENERATION SCHEDULE
- (RG-M1)** RG-M1 - REVEGETATION TYPE M1: GRASSES & GROUNDCOVER ONLY REFER TO REGENERATION SCHEDULE
- (RG-M2)** RG-M2 - REVEGETATION TYPE M2: TREES, SHRUBS, GROUNDCOVERS REFER TO REGENERATION SCHEDULE
- (RG-X1)** RG-X1 - REVEGETATION TYPE X1: GRASSES & GROUNDCOVER ONLY REFER TO REGENERATION SCHEDULE
- (RG-X2)** RG-X2 - REVEGETATION TYPE X2: TREES, SHRUBS, GROUNDCOVERS REFER TO REGENERATION SCHEDULE
- (RG-Y1)** RG-Y1 - REVEGETATION TYPE Y1: GRASSES & GROUNDCOVER ONLY REFER TO REGENERATION SCHEDULE
- (RG-Y2)** RG-Y2 - REVEGETATION TYPE Y2: TREES, SHRUBS, GROUNDCOVERS REFER TO REGENERATION SCHEDULE
- (RG-N1)** RG-N1 - REVEGETATION TYPE N1: GRASSES & GROUNDCOVER ONLY REFER TO REGENERATION SCHEDULE
- (RG-N2)** RG-N2 - REVEGETATION TYPE N2: TREES, SHRUBS, GROUNDCOVERS REFER TO REGENERATION SCHEDULE
- (RG-E1)** RG-E1 - REVEGETATION TYPE E1: GRASSES & GROUNDCOVER ONLY REFER TO REGENERATION SCHEDULE
- (RG-E2)** RG-E2 - REVEGETATION TYPE E2: TREES, SHRUBS, GROUNDCOVERS REFER TO REGENERATION SCHEDULE
- (RG-F1)** RG-F1 - REVEGETATION TYPE F1: GRASSES & GROUNDCOVER ONLY REFER TO REGENERATION SCHEDULE
- (RG-F2)** RG-F2 - REVEGETATION TYPE F2: TREES, SHRUBS, GROUNDCOVERS REFER TO REGENERATION SCHEDULE



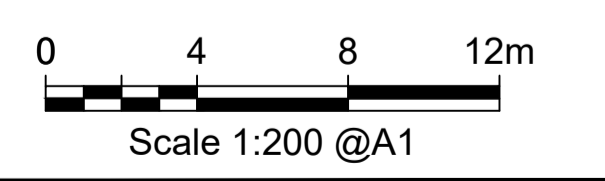
ALLOW TO PLANT 11 *Alectryon coriaceus* TO PROVIDE SCREENING TO 1 OCEANIC DR

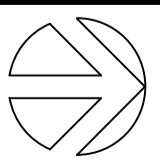
**REGENERATION MANAGEMENT ZONE Y.**  
 AREA IS DOMINATED BY MAINTAINED EXOTIC GRASSES, GARDEN EXTENSIONS, EXOTIC VEGETATION AND WEEDS (25- 75%). OTHER THAN A FEW SMALL NODES OF NATIVE VEGETATION, THE ZONE GENERALLY IS CHARACTERISED BY POOR RESILIENCE, RECRUITMENT AND STRUCTURE.  
 AREA TO BE SELECTIVELY WEEDED - TARGETING LEAST DEGRADED AREAS AND WORKING OUT TO THE AREAS SUBJECT TO HIGHEST LEVELS OF DEGRADATION. PRIORITISE TREATMENT OF BRYOPHYLLUM SP. TREAT ASPARAGUS FERN AND GLORIOSA SUPERBA SELECTIVELY TREAT STANDING BROAD-LEAVED PEPPER TREES AND UMBRELLA TREES WHERE SAFE TO DO SO (AWAY FROM PUBLIC ACCESS AREAS)

**REGENERATION MANAGEMENT ZONE E.**  
 REGENERATING LITTORAL RAINFOREST COMMUNITY WITH LIGHT TO MODERATE DENSITY OF WEEDS (PARTICULARLY ON EDGES).  
 WORK FROM NODES OF RESILIENCE AND STRENGTHEN AREAS WITH GOOD CANOPY COVER AND HIGH DIVERSITY. MAINTAIN GOOD VEGETATION TO PREVENT ANY DEGRADATION.  
 TREAT ASPARAGUS FERN AND GLORIOSA SUPERBA  
 TREAT PAINTED SPURGE  
 TREAT EXOTIC VINE SPP.  
 SELECTIVELY TREAT STANDING BROAD-LEAVED PEPPER TREES AND UMBRELLA TREES WHERE SAFE TO DO SO (AWAY FROM PUBLIC ACCESS AREAS)

**NOTE:**  
 THE REGENERATION ZONES IDENTIFIED ON THESE PLANS ARE FROM THE WARANA FORESHORE BUSHLAND RESERVE REGENERATION WORKS PLAN 2014, WHICH SHOULD BE READ IN CONJUNCTION WITH THIS PLAN. REFER TO THE WARANA FORESHORE BUSHLAND RESERVE REGENERATION WORKS PLAN 2014 FOR TECHNICAL WEED MANAGEMENT SPECIFICATIONS

- NOTES**
1. PLANTING TECHNIQUE MUST BE APPROVED AND SUPERVISED BY NOMINATED SCC NATURAL AREAS OFFICER.
  2. UNDERTAKE WORK IN ACCORDANCE WITH IT11866 - VEGETATION MANAGEMENT SERVICES SPECIFICATIONS
  3. IMPLEMENT A PLANT GROWN-ON CONTRACT - SOURCE PLANTS OF PROVENANCE TO THE SCC REGION
  4. IMPLEMENT AN APPROVED WEED MANAGEMENT PROGRAM ACROSS THE SITE
  5. LIMIT CLEARING NATIVE VEGETATION AS FAR AS PRACTICAL
  6. CAREFULLY CLEAR SURFACE ORGANIC MATERIAL AND SOIL/SAND FROM PATHWAY ALIGNMENT AND RE-SPREADING ON DISTURBED AREAS INCLUDING EMBANKMENTS TO ENCOURAGE NATIVE SEED REGENERATION.
  7. STABILISE DISTURBED AREAS AT RISK OF EROSION WITH JUTE NETTING AND COIR LOGS
  8. SET-OUT VIEW CORRIDORS AND BOUNDARIES BETWEEN DIFFERENT REVEGETATION TYPES
  9. SETOUT TREES FIRST AND INFILL WITH SHRUBS AND GROUNDCOVERS
  10. LAYER THE PLANTING WITH FRONTLINE COASTAL SPECIES TOWARDS THE OCEAN AND SECOND LINE COASTAL SPECIES IN MORE SHELTERED LOCATIONS
  11. PLANT SPECIES IN GROUPS OF 3,5 OR 7 IN A TRIANGULAR GRID
  12. THE DESIGN INTENT IS TO ACHIEVE THE APPEARANCE OF A NATURAL VEGETATION COMMUNITY
  13. SETOUT TO BE APPROVED ON SITE BY SCC LANDSCAPE ARCHITECT PRIOR TO PLANTING
  14. PLANT INTO NATIVE SOILS, DO NOT INTRODUCE GARDEN SOIL TO THE SITE
  15. MULCH RECOVERED FROM CLEARED (APPROVED) VEGETATION TO BE REUSED ON SITE. DO NOT IMPORT MULCH UNLESS APPROVED BY THE SUPERINTENDENT.



J	12/06/2024	BUSHLAND REGENERATION PLAN	CD		CD		
I	28/03/2024	REVISED PATH ALIGNMENT BETWEEN CH420-CH540 ISSUE	JB	HG	CD		
H	07/03/2024	REVISED CONSTRUCTION ISSUE	JB	HG	CD		A1 - 1:200
G	01/02/2024	ISSUED FOR CONSTRUCTION	JB	HG	CD		A3 - 1:400
Rv.	DATE	REVISIONS	DRAWN	CHECK 1	CHECK 2	SCALE	

  
 Design & Placemaking Services | Landscape Architecture Services

**COASTAL PATHWAY BA233 TO BA229 WARANA**  
**BUSHLAND REGENERATION PLAN**

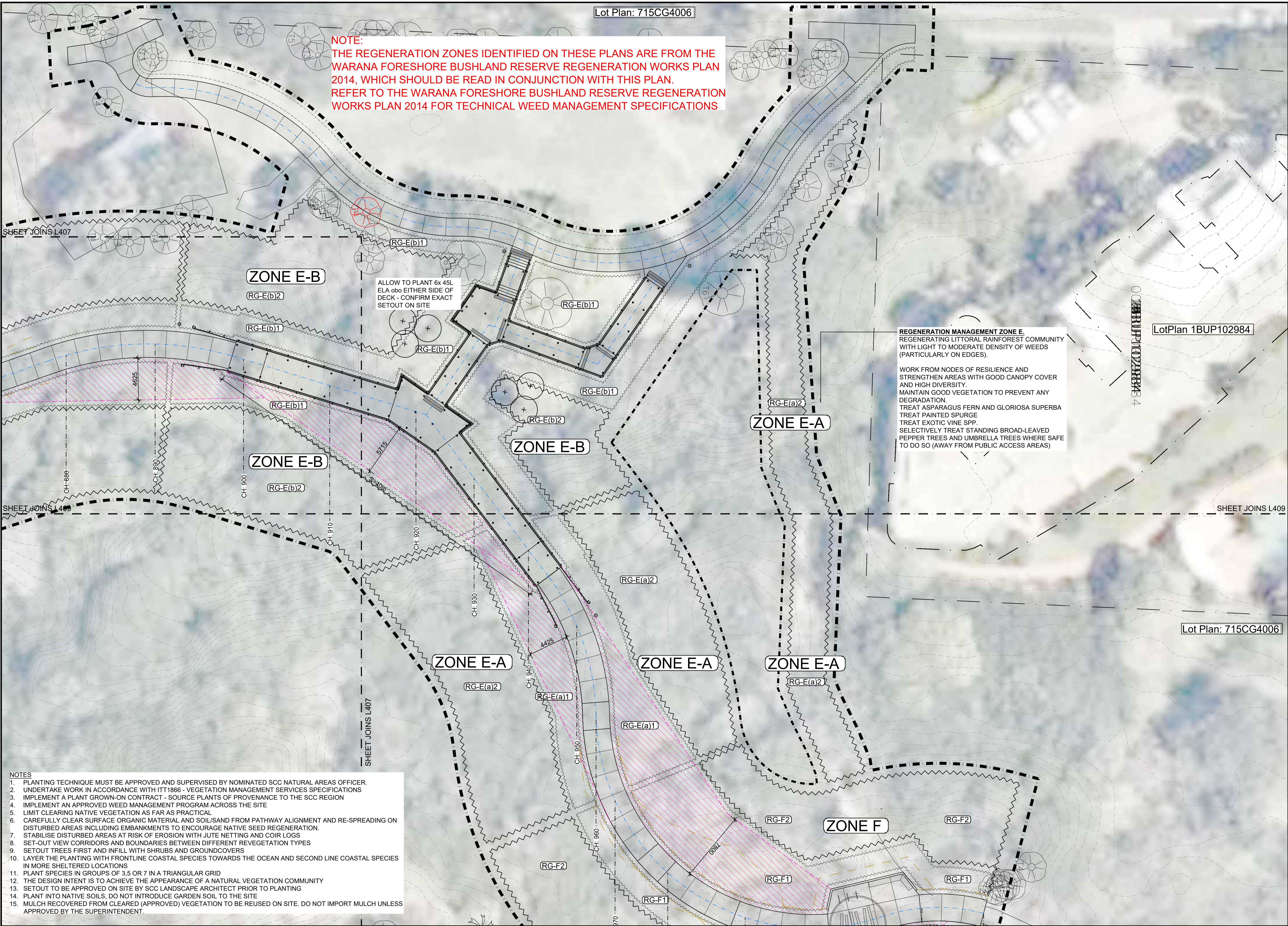
Design ID.  
**P-K2705**

Sheet No. - Revision No.  
**L407 J**

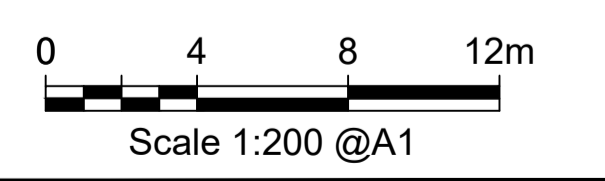
**NOTE:**  
 THE REGENERATION ZONES IDENTIFIED ON THESE PLANS ARE FROM THE WARANA FORESHORE BUSHLAND RESERVE REGENERATION WORKS PLAN 2014, WHICH SHOULD BE READ IN CONJUNCTION WITH THIS PLAN. REFER TO THE WARANA FORESHORE BUSHLAND RESERVE REGENERATION WORKS PLAN 2014 FOR TECHNICAL WEED MANAGEMENT SPECIFICATIONS

**REVEGETATION PLANTING PLAN LEGEND**

- EOW - PRIMARY EXTENT OF WORKS
- - - EXISTING RP PROPERTY BOUNDARY
- EXISTING TREE TO BE RETAINED AND PROTECTED. REFER TO TREE PROTECTION NOTES.
- PROPOSED TREES REFER TO 900 SERIES PLANS REFER TO SPECIFICATION REFER TO PLAN SCHEDULE
- BUSHLAND REGENERATION AREAS
- SIGHTLINES AREAS - LOW GROUNDCOVERS ONLY MAXIMUM MATURE HEIGHT 0.4M
- REGENERATION ZONE** REFER TO REGENERATION SCHEDULE REFER TO REGENERATION PLAN
- (RG-D1)** RG-D1 - REVEGETATION TYPE D1: GROUNDCOVER ONLY U.N.O. REFER TO REGENERATION SCHEDULE
- (RG-S1)** RG-S1 - REVEGETATION TYPE S1: GRASSES & GROUNDCOVER ONLY REFER TO REGENERATION SCHEDULE
- (RG-S2)** RG-S2 - REVEGETATION TYPE S2: TREES, SHRUBS, GROUNDCOVERS REFER TO REGENERATION SCHEDULE
- (RG-M1)** RG-M1 - REVEGETATION TYPE M1: GRASSES & GROUNDCOVER ONLY REFER TO REGENERATION SCHEDULE
- (RG-M2)** RG-M2 - REVEGETATION TYPE M2: TREES, SHRUBS, GROUNDCOVERS REFER TO REGENERATION SCHEDULE
- (RG-X1)** RG-X1 - REVEGETATION TYPE X1: GRASSES & GROUNDCOVER ONLY REFER TO REGENERATION SCHEDULE
- (RG-X2)** RG-X2 - REVEGETATION TYPE X2: TREES, SHRUBS, GROUNDCOVERS REFER TO REGENERATION SCHEDULE
- (RG-Y1)** RG-Y1 - REVEGETATION TYPE Y1: GRASSES & GROUNDCOVER ONLY REFER TO REGENERATION SCHEDULE
- (RG-Y2)** RG-Y2 - REVEGETATION TYPE Y2: TREES, SHRUBS, GROUNDCOVERS REFER TO REGENERATION SCHEDULE
- (RG-N1)** RG-N1 - REVEGETATION TYPE N1: GRASSES & GROUNDCOVER ONLY REFER TO REGENERATION SCHEDULE
- (RG-N2)** RG-N2 - REVEGETATION TYPE N2: TREES, SHRUBS, GROUNDCOVERS REFER TO REGENERATION SCHEDULE
- (RG-E1)** RG-E1 - REVEGETATION TYPE E1: GRASSES & GROUNDCOVER ONLY REFER TO REGENERATION SCHEDULE
- (RG-E2)** RG-E2 - REVEGETATION TYPE E2: TREES, SHRUBS, GROUNDCOVERS REFER TO REGENERATION SCHEDULE
- (RG-F1)** RG-F1 - REVEGETATION TYPE F1: GRASSES & GROUNDCOVER ONLY REFER TO REGENERATION SCHEDULE
- (RG-F2)** RG-F2 - REVEGETATION TYPE F2: TREES, SHRUBS, GROUNDCOVERS REFER TO REGENERATION SCHEDULE



- NOTES**
1. PLANTING TECHNIQUE MUST BE APPROVED AND SUPERVISED BY NOMINATED SCC NATURAL AREAS OFFICER.
  2. UNDERTAKE WORK IN ACCORDANCE WITH ITT1866 - VEGETATION MANAGEMENT SERVICES SPECIFICATIONS
  3. IMPLEMENT A PLANT GROWN-ON CONTRACT - SOURCE PLANTS OF PROVENANCE TO THE SCC REGION
  4. IMPLEMENT AN APPROVED WEED MANAGEMENT PROGRAM ACROSS THE SITE
  5. LIMIT CLEARING NATIVE VEGETATION AS FAR AS PRACTICAL
  6. CAREFULLY CLEAR SURFACE ORGANIC MATERIAL AND SOIL/SAND FROM PATHWAY ALIGNMENT AND RE-SPREADING ON DISTURBED AREAS INCLUDING EMBANKMENTS TO ENCOURAGE NATIVE SEED REGENERATION.
  7. STABILISE DISTURBED AREAS AT RISK OF EROSION WITH JUTE NETTING AND COIR LOGS
  8. SET-OUT VIEW CORRIDORS AND BOUNDARIES BETWEEN DIFFERENT REVEGETATION TYPES
  9. SETOUT TREES FIRST AND INFILL WITH SHRUBS AND GROUNDCOVERS
  10. LAYER THE PLANTING WITH FRONTLINE COASTAL SPECIES TOWARDS THE OCEAN AND SECOND LINE COASTAL SPECIES IN MORE SHELTERED LOCATIONS
  11. PLANT SPECIES IN GROUPS OF 3, 5 OR 7 IN A TRIANGULAR GRID
  12. THE DESIGN INTENT IS TO ACHIEVE THE APPEARANCE OF A NATURAL VEGETATION COMMUNITY
  13. SETOUT TO BE APPROVED ON SITE BY SCC LANDSCAPE ARCHITECT PRIOR TO PLANTING
  14. PLANT INTO NATIVE SOILS, DO NOT INTRODUCE GARDEN SOIL TO THE SITE
  15. MULCH RECOVERED FROM CLEARED (APPROVED) VEGETATION TO BE REUSED ON SITE. DO NOT IMPORT MULCH UNLESS APPROVED BY THE SUPERINTENDENT.

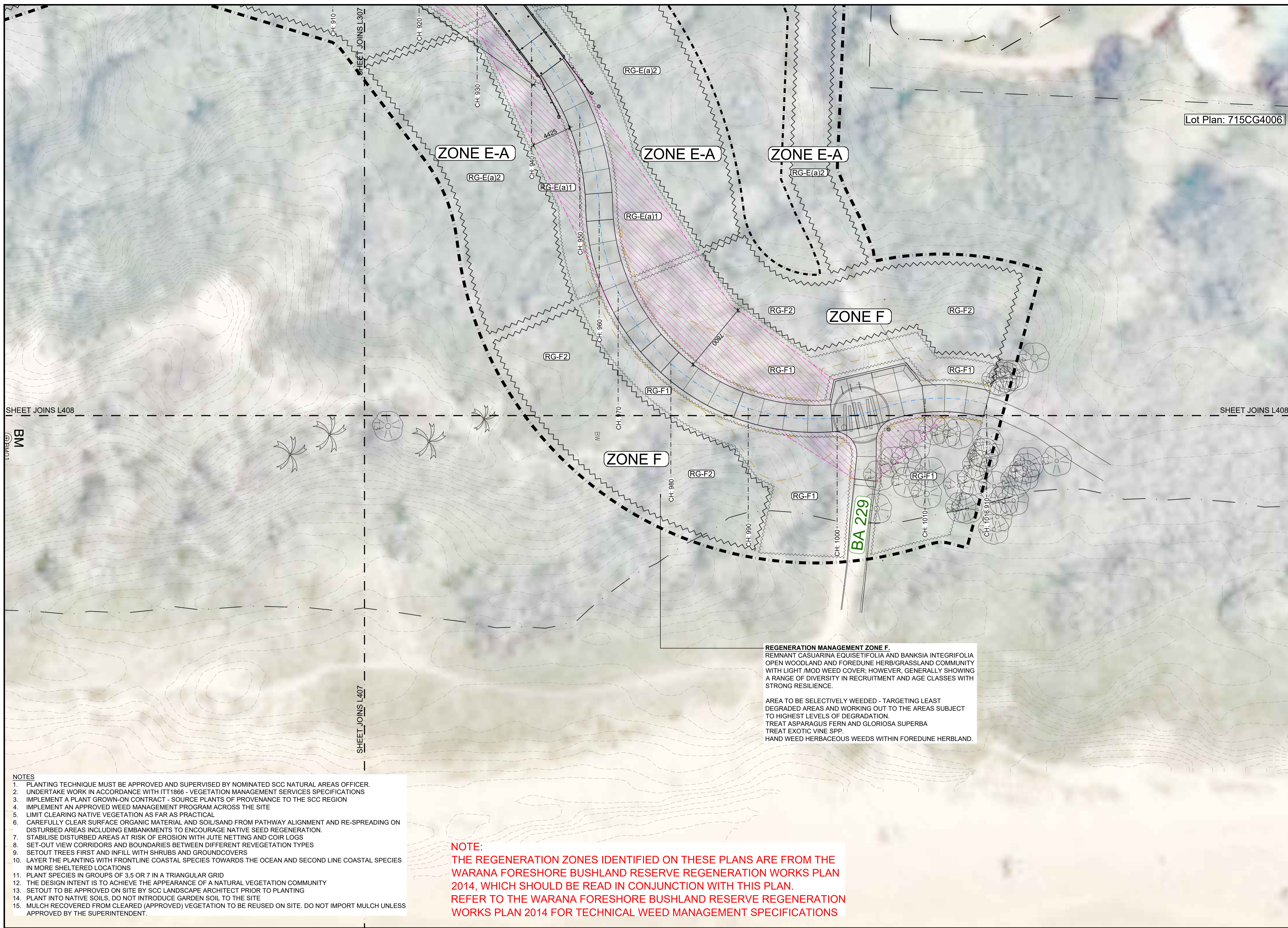


Rv.	DATE	REVISIONS	DRAWN	CHECK 1	CHECK 2	SCALE
J	12/06/2024	BUSHLAND REGENERATION PLAN	CD		CD	
I	28/03/2024	REVISED PATH ALIGNMENT BETWEEN CH420-CH540 ISSUE	JB	HG	CD	
H	07/03/2024	REVISED CONSTRUCTION ISSUE	JB	HG	CD	A1 - 1:200
G	01/02/2024	ISSUED FOR CONSTRUCTION	JB	HG	CD	A3 - 1:400

**Sunshine Coast COUNCIL**  
 Design & Placemaking Services | Landscape Architecture Services

**COASTAL PATHWAY BA233 TO BA229 WARANA**  
**BUSHLAND REGENERATION PLAN**

Design ID.  
**P-K2705**  
 Sheet No. - Revision No.  
**L408 J**



**REVEGETATION PLANTING PLAN LEGEND**

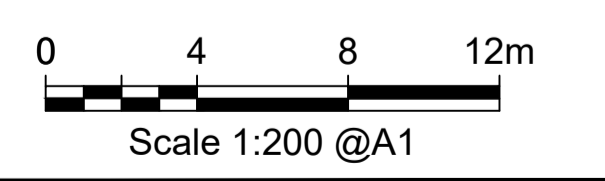
- EOW - PRIMARY EXTENT OF WORKS
- - - EXISTING RP PROPERTY BOUNDARY
- EXISTING TREE TO BE RETAINED AND PROTECTED. REFER TO TREE PROTECTION NOTES.
- PROPOSED TREES REFER TO 900 SERIES PLANS REFER TO SPECIFICATION REFER TO PLAN SCHEDULE
- BUSHLAND REGENERATION AREAS
- SIGHTLINES AREAS - LOW GROUNDCOVERS ONLY MAXIMUM MATURE HEIGHT 0.4M
- REGENERATION ZONE** REFER TO REGENERATION SCHEDULE REFER TO REGENERATION PLAN
- (RG-D1)** RG-D1 - REVEGETATION TYPE D1: GROUNDCOVER ONLY U.N.O. REFER TO REGENERATION SCHEDULE
- (RG-S1)** RG-S1 - REVEGETATION TYPE S1: GRASSES & GROUNDCOVER ONLY REFER TO REGENERATION SCHEDULE
- (RG-S2)** RG-S2 - REVEGETATION TYPE S2: TREES, SHRUBS, GROUNDCOVERS REFER TO REGENERATION SCHEDULE
- (RG-M1)** RG-M1 - REVEGETATION TYPE M1: GRASSES & GROUNDCOVER ONLY REFER TO REGENERATION SCHEDULE
- (RG-M2)** RG-M2 - REVEGETATION TYPE M2: TREES, SHRUBS, GROUNDCOVERS REFER TO REGENERATION SCHEDULE
- (RG-X1)** RG-X1 - REVEGETATION TYPE X1: GRASSES & GROUNDCOVER ONLY REFER TO REGENERATION SCHEDULE
- (RG-X2)** RG-X2 - REVEGETATION TYPE X2: TREES, SHRUBS, GROUNDCOVERS REFER TO REGENERATION SCHEDULE
- (RG-Y1)** RG-Y1 - REVEGETATION TYPE Y1: GRASSES & GROUNDCOVER ONLY REFER TO REGENERATION SCHEDULE
- (RG-Y2)** RG-Y2 - REVEGETATION TYPE Y2: TREES, SHRUBS, GROUNDCOVERS REFER TO REGENERATION SCHEDULE
- (RG-N1)** RG-N1 - REVEGETATION TYPE N1: GRASSES & GROUNDCOVER ONLY REFER TO REGENERATION SCHEDULE
- (RG-N2)** RG-N2 - REVEGETATION TYPE N2: TREES, SHRUBS, GROUNDCOVERS REFER TO REGENERATION SCHEDULE
- (RG-E1)** RG-E1 - REVEGETATION TYPE E1: GRASSES & GROUNDCOVER ONLY REFER TO REGENERATION SCHEDULE
- (RG-E2)** RG-E2 - REVEGETATION TYPE E2: TREES, SHRUBS, GROUNDCOVERS REFER TO REGENERATION SCHEDULE
- (RG-F1)** RG-F1 - REVEGETATION TYPE F1: GRASSES & GROUNDCOVER ONLY REFER TO REGENERATION SCHEDULE
- (RG-F2)** RG-F2 - REVEGETATION TYPE F2: TREES, SHRUBS, GROUNDCOVERS REFER TO REGENERATION SCHEDULE

**REGENERATION MANAGEMENT ZONE F.**  
 REMNANT CASUARINA EQUISSETIFOLIA AND BANKSIA INTEGRIFOLIA OPEN WOODLAND AND FOREDUNE HERB/GRASSLAND COMMUNITY WITH LIGHT /MOD WEED COVER; HOWEVER, GENERALLY SHOWING A RANGE OF DIVERSITY IN RECRUITMENT AND AGE CLASSES WITH STRONG RESILIENCE.

AREA TO BE SELECTIVELY WEEDED - TARGETING LEAST DEGRADED AREAS AND WORKING OUT TO THE AREAS SUBJECT TO HIGHEST LEVELS OF DEGRADATION.  
 TREAT ASPARAGUS FERN AND GLORIOSA SUPERBA  
 TREAT EXOTIC VINE SPP.  
 HAND WEED HERBACEOUS WEEDS WITHIN FOREDUNE HERBLAND.

- NOTES**
1. PLANTING TECHNIQUE MUST BE APPROVED AND SUPERVISED BY NOMINATED SCC NATURAL AREAS OFFICER.
  2. UNDERTAKE WORK IN ACCORDANCE WITH IT11866 - VEGETATION MANAGEMENT SERVICES SPECIFICATIONS
  3. IMPLEMENT A PLANT GROWN-ON CONTRACT - SOURCE PLANTS OF PROVENANCE TO THE SCC REGION
  4. IMPLEMENT AN APPROVED WEED MANAGEMENT PROGRAM ACROSS THE SITE
  5. LIMIT CLEARING NATIVE VEGETATION AS FAR AS PRACTICAL
  6. CAREFULLY CLEAR SURFACE ORGANIC MATERIAL AND SOIL/SAND FROM PATHWAY ALIGNMENT AND RE-SPREADING ON DISTURBED AREAS INCLUDING EMBANKMENTS TO ENCOURAGE NATIVE SEED REGENERATION.
  7. STABILISE DISTURBED AREAS AT RISK OF EROSION WITH JUTE NETTING AND COIR LOGS
  8. SET-OUT VIEW CORRIDORS AND BOUNDARIES BETWEEN DIFFERENT REVEGETATION TYPES
  9. SETOUT TREES FIRST AND INFILL WITH SHRUBS AND GROUNDCOVERS
  10. LAYER THE PLANTING WITH FRONTLINE COASTAL SPECIES TOWARDS THE OCEAN AND SECOND LINE COASTAL SPECIES IN MORE SHELTERED LOCATIONS
  11. PLANT SPECIES IN GROUPS OF 3, 5 OR 7 IN A TRIANGULAR GRID
  12. THE DESIGN INTENT IS TO ACHIEVE THE APPEARANCE OF A NATURAL VEGETATION COMMUNITY
  13. SETOUT TO BE APPROVED ON SITE BY SCC LANDSCAPE ARCHITECT PRIOR TO PLANTING
  14. PLANT INTO NATIVE SOILS, DO NOT INTRODUCE GARDEN SOIL TO THE SITE
  15. MULCH RECOVERED FROM CLEARED (APPROVED) VEGETATION TO BE REUSED ON SITE. DO NOT IMPORT MULCH UNLESS APPROVED BY THE SUPERINTENDENT.

**NOTE:**  
 THE REGENERATION ZONES IDENTIFIED ON THESE PLANS ARE FROM THE WARANA FORESHORE BUSHLAND RESERVE REGENERATION WORKS PLAN 2014, WHICH SHOULD BE READ IN CONJUNCTION WITH THIS PLAN.  
 REFER TO THE WARANA FORESHORE BUSHLAND RESERVE REGENERATION WORKS PLAN 2014 FOR TECHNICAL WEED MANAGEMENT SPECIFICATIONS



J	12/06/2024	BUSHLAND REGENERATION PLAN	CD		CD		
I	28/03/2024	REVISED PATH ALIGNMENT BETWEEN CH420-CH540 ISSUE	JB	HG	CD		
H	07/03/2024	REVISED CONSTRUCTION ISSUE	JB	HG	CD		A1 - 1:200
G	01/02/2024	ISSUED FOR CONSTRUCTION	JB	HG	CD		A3 - 1:400
Rv.	DATE	REVISIONS	DRAWN	CHECK 1	CHECK 2	SCALE	

**Sunshine Coast COUNCIL**  
 Design & Placemaking Services | Landscape Architecture Services

**COASTAL PATHWAY BA233 TO BA229 WARANA**  
**BUSHLAND REGENERATION PLAN**

Design ID.	<b>P-K2705</b>
Sheet No. - Revision No.	<b>L409 J</b>

FILE:O:\Design\apps\P-K2705 Coastal Pathway BA233 to BA229 Warana\_AutoCAD\p-k2705 Coastal Pathway BA233 to BA229 Warana\_West Alignment 240417 - Copy.dwg DATE:11/June/2024 BY:cm