

Project number: H5955

## Karawatha Drive Cycle Track, Mountain Creek



Underground services investigations



Wednesday 9 August to late September 2023 (day and night works) *Weather permitting.*



Various locations along the final cycle track route - between Golf Links Road and Prelude Drive/Lady Musgrave Drive, Mountain Creek



Traffic control in operation as required

### Works overview

With community engagement now complete, council is progressing detailed design for the new cycle track to be constructed between Golf Links Road, Prelude Drive and Lady Musgrave Drive in Mountain Creek.

The project is recognised as a *Priority A Route* in the Queensland Government's [Principal Cycle Network](#). This rating is the highest priority allocated to provide valuable and safe active transport connections for people walking, riding and using micro mobility (e-bikes, scooters, skateboards etc).

Building a 1.6km separated cycle track will improve riding confidence and safety for all users and provide an efficient travel route to nearby destinations such as schools, TAFE, businesses and Mooloolaba.

As part of the ongoing detailed design process underground services investigation works will be undertaken in various locations along the route between Wednesday 9 August and late September 2023.

This work will be carried out by experienced professionals using specialist equipment and machinery including ground penetrating radar and vacuum excavation equipment.

Some investigations may be done at night or during weekends to minimise inconvenience to our community and/or take advantage of reduced traffic volumes. All relevant permits will be in place to undertake these works.

### What to expect during these works

These works will produce low-level to moderate noise. Traffic control will be in place as required during day and night works. Please allow extra travel time during this period and follow the instructions of traffic controllers and/or signage for your safety.

### To find out more about the project

The cycle track will be constructed in stages over several years, subject to funding. Construction will see the widening of the road, installation of the cycle track and further landscaping works including extensive revegetation.

For more information, including the design of the track and indicative construction timing, visit the project webpage here:

<https://www.sunshinecoast.qld.gov.au/Council/Planning-and-Projects/Infrastructure-Projects/karawatha-drive-cycle-track>

### Register for project updates and/or contact the project team

Council's commitment to sustainability means that all future updates will be **emailed** to those who register to receive them.

All information contained in this communication is accurate at the time of distribution however works and dates are subject to change due to circumstances outside of Sunshine Coast Council's control.

To register for email updates, click on the link below and insert your details:

<https://our.sunshinecoast.qld.gov.au/LP=206>

You can also seek further information about the project by emailing the project team on:

[karawathacycleproject@sunshinecoast.qld.gov.au](mailto:karawathacycleproject@sunshinecoast.qld.gov.au)

or contact council's customer response team (please quote 'Karawatha Drive Cycle Track Project') via:

[mail@sunshinecoast.qld.gov.au](mailto:mail@sunshinecoast.qld.gov.au)

T 07 5475 7272 F 07 5475 7277

Locked Bag 72 Sunshine Coast Mail Centre Qld 4560

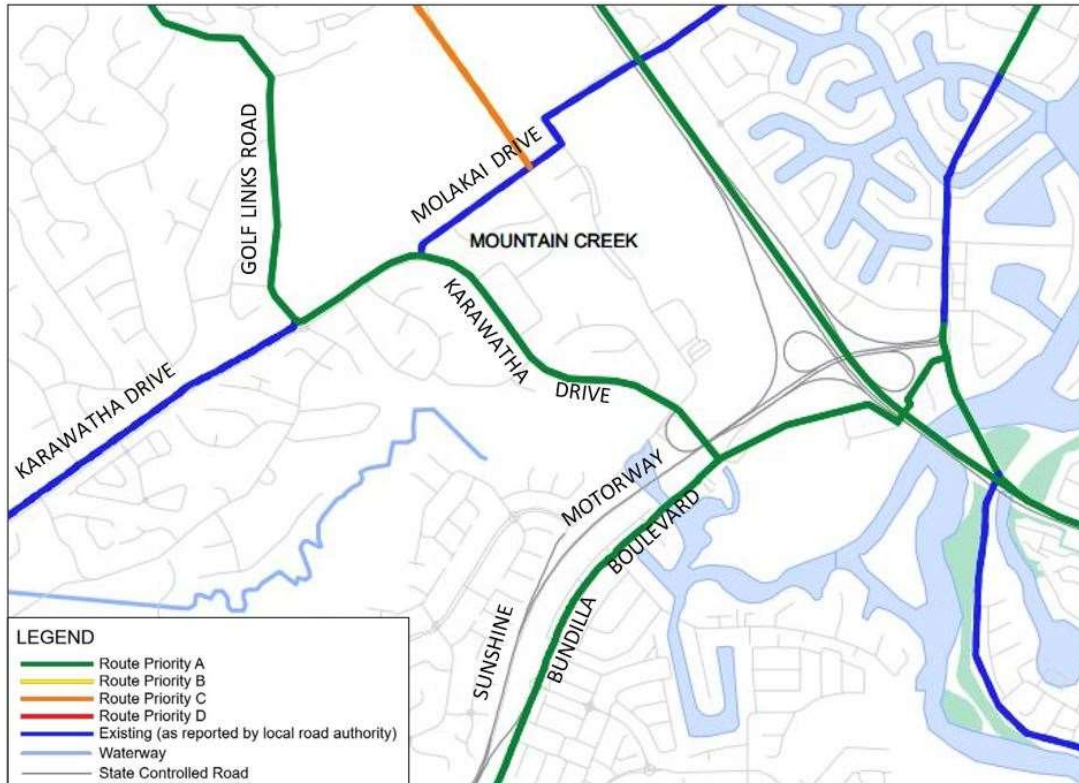


Figure 1. Karawatha Drive Cycle Track Route between Golf Links Road, Prelude Drive and Lady Musgrave Drive

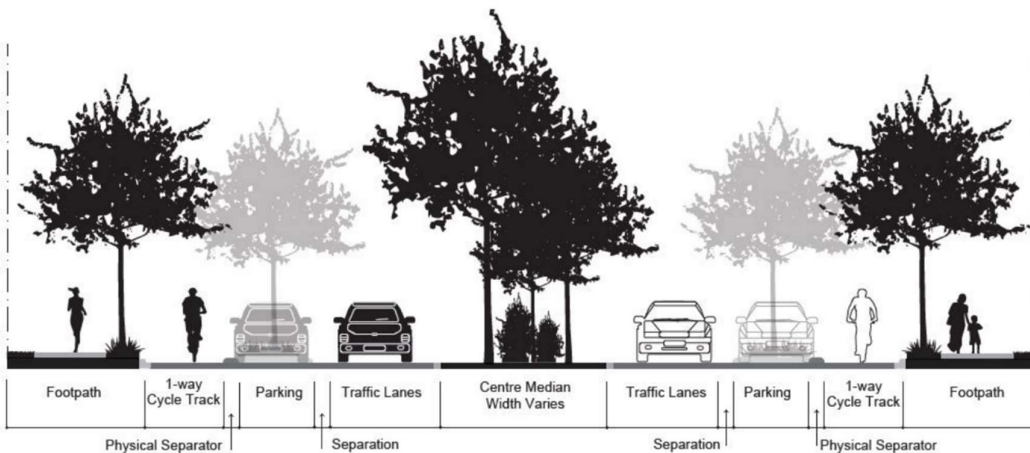


Figure 2. Typical layout of roadway including cycle track