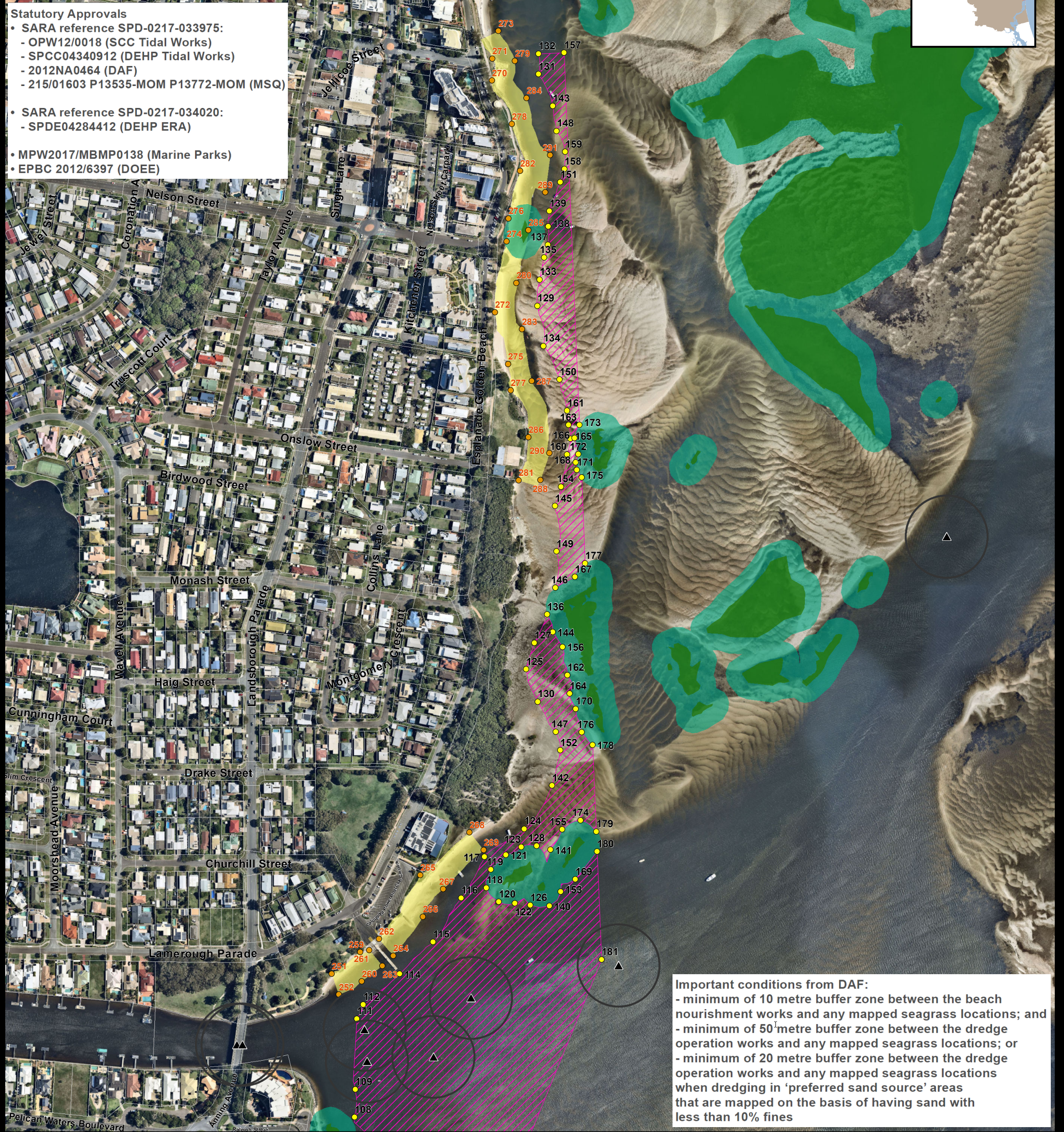




Statutory Approvals

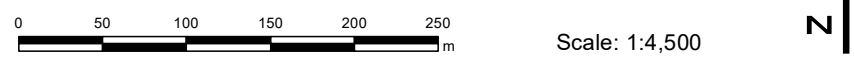
- SARA reference SPD-0217-033975:
 - OPW12/0018 (SCC Tidal Works)
 - SPCC04340912 (DEHP Tidal Works)
 - 2012NA0464 (DAF)
 - 215/01603 P13535-MOM P13772-MOM (MSQ)
- SARA reference SPD-0217-034020:
 - SPDE04284412 (DEHP ERA)
- MPW2017/MBMP0138 (Marine Parks)
- EPBC 2012/6397 (DOEE)



Important conditions from DAF:

- minimum of 10 metre buffer zone between the beach nourishment works and any mapped seagrass locations; and
- minimum of 50 metre buffer zone between the dredge operation works and any mapped seagrass locations; or
- minimum of 20 metre buffer zone between the dredge operation works and any mapped seagrass locations when dredging in 'preferred sand source' areas that are mapped on the basis of having sand with less than 10% fines

- Legend**
- ▲ On Water Navigation Aids MSQ
 - On Water Navigation Aids MSQ 50m Buffer
 - Renourishment Area Vertices
 - Dredge Area Vertices
 - ▨ Dredge Area
 - B22632 Seagrass 2022
 - B22632 Seagrass 20m Buffer
 - 400000 Renourishment Area Dec 2016



Disclaimer

While every care is taken to ensure the accuracy of this product, neither the Sunshine Coast Council nor the State of Queensland makes any representations or warranties about its accuracy, reliability, completeness or suitability for any particular purpose and disclaims all responsibility and all liability (including without limitation, liability in negligence) for all expenses, losses, damages (including indirect or consequential damage) and costs that may occur as a result of the product being inaccurate or incomplete in any way or for any reason.

© Crown & Council Copyright Reserved.



Date: Tuesday, 29 March 2022
A3 Created by: ke018